



Service ♦ Technical Support ♦ Quality Products

Grass Roots, Inc. Company Resume

Established: 1978

Physical Address: **GOLF DIVISION**
4 Middlebury Blvd., Suite 7
Randolph, NJ 07869
Phone: (973) 252-6634
Fax: (973) 252-6630

LAWN & SPORTS TURF DIVISION
4 Middlebury Blvd., Suite 14
Randolph, NJ 07869
Phone: (973) 252-5455
Fax: (973) 252-2881

Website: www.griturf.com

Mailing Address: P.O. Box 336
Mount Freedom, NJ 07970

Pesticide Dealer #'s: NJ-40100 NY-R05108

Employees: Sales & Service: 12 full time/2 part time
Financial Office: 2 full time/1 part time



Direct Distribution of Golf Course Maintenance Supplies and Landscape Materials:

Pesticides: AgraQuest, BASF, Bayer E.S., Cleary Chemical, Dow AgroSciences, DuPont, SePRO and Syngenta

Fertilizer: Andersons, Biagro Western, Growth Products, Lebanon, Emerald Isle Products, Plant Marvel, Roots (Lebanon), Ocean Organics, PHC(Lebanon) and SoluCal

Grass Seed: Lebanon, Barenbrug,

Adjuvants: Aquatrols, Milliken, Montco and Parkway Research

Amendments: Partac Peat Corp., Profile Products (Turfce), Fertl Soil, Old Castle, Liberty Tire

Accessories: Standard Golf, Par Aide, MarkSmart, Master of the Links, J.A. Cissel, Swan Hose, Rugg Manufacturing, H.P.I., Play Products, Inc., Compliance Safety, Fairway Products, Hole-In-White, Spyker

Landscape Tools: Border Concepts, ProScape, Spyker and Andersons' spreaders, Midwest Rake

Mulches/Soil/Others: Assorted soils/mulches from Oldcastle

Publication: the Root Zone (seasonal newsletter)

Memberships:

- New Jersey Turfgrass Association (NJTA)
- Golf Course Superintendents Association of New Jersey (GCSANJ)
- Metropolitan Golf Course Superintendents Association (MetGCSA)
- Pocono Turfgrass Association, O.J. Noer Research Foundation
- Golf Course Superintendents Association of America (GCSAA)
- United States Golf Association (USGA)- Associate Membership
- New Jersey Landscape Contractors Association (NJLCA)
- Sports Field Managers Association of New Jersey (SFMANJ)
- Sports Turf Managers Association (STMA)
- Morris County Cooperative Pricing Council (MCCPC)
- NJGIC (NJ Green Industry Council), ARI Network Services
- Electronic Data Interchange (EDI)-Meppel
- Tri-State Turf Research Foundation, United States Tennis Association (USTA)

Golf Division (973) 252-6634 Lawn & Sports Turf Division (973) 252-5455

www.GRIturf.com

Company Profile



Service ♦ Technical Support ♦ Quality Products



Grass Roots, Inc. is a company focused on Service, Technical Support and Quality Products. We opened in 1978 with a focus on servicing the needs of the golf course superintendent. In 2007, Grass Roots opened a Lawn & Sports Turf Division. We pride ourselves on our ability to make solid recommendations to the turf care professional and deliver products in a timely manner. We carry a full line of turf maintenance supplies from the leading manufacturers in the industry. Products include plant protectants, fertilizers, grass seed, tools, golf course accessories, soils, topdressing, mulches, adjuvants and much more.

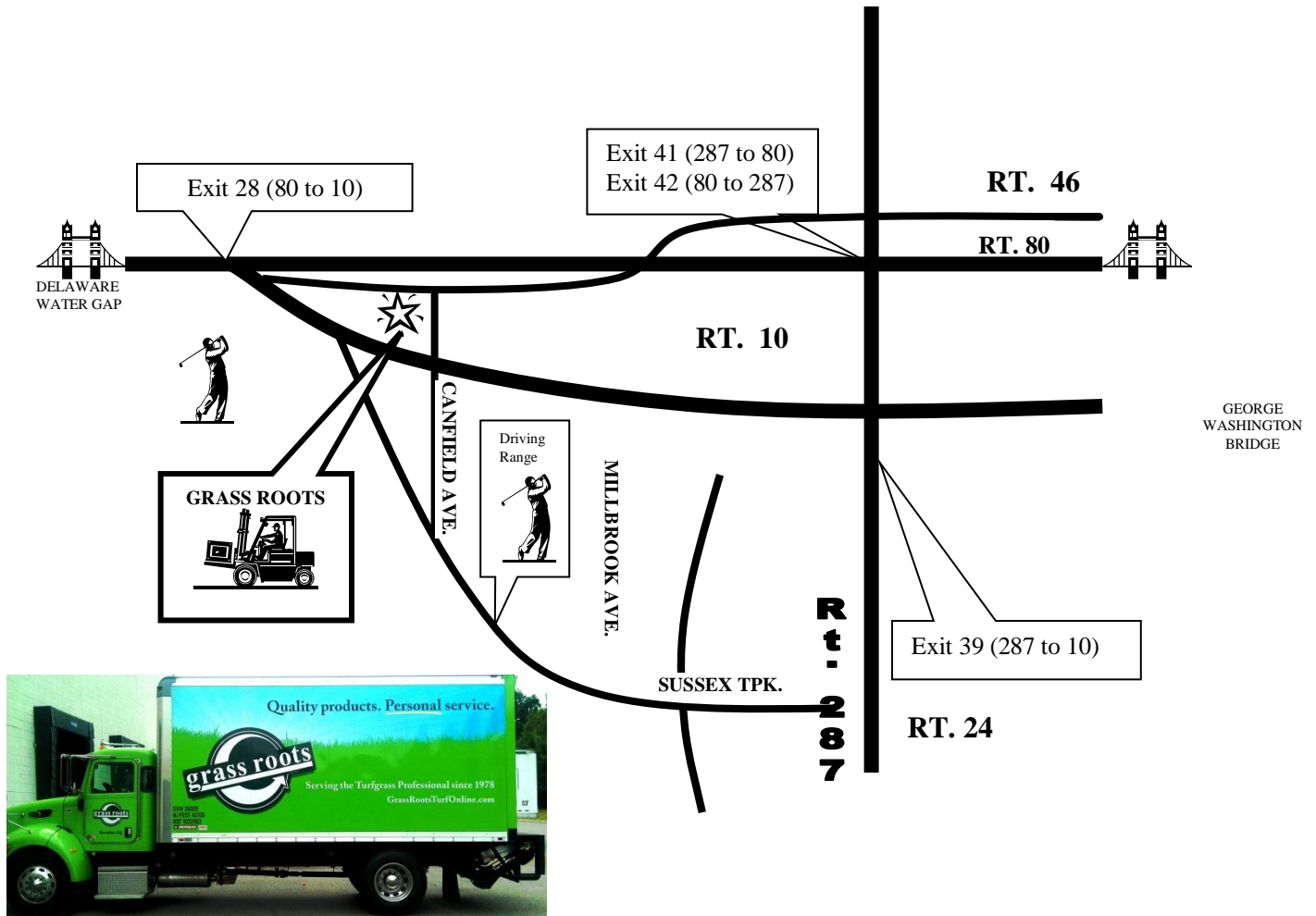
Golf Division (973) 252-6634 Lawn & Sports Turf Division (973) 252-5455

www.GRIturf.com

Directions



Service ♦ Technical Support ♦ Quality Products



DIRECTIONS

(from North, East, and South)

- * Take Route 287 to Route 10 (Northbound = Exit 39, Southbound = Exit 39B)
- * Follow signs for Route 10 West.
- * Stay on Route 10 for approximately 10 miles.
- * Turn right at Canfield Ave. (traffic light @ High Grade Beverage)
- * Stay on Canfield Ave. for ½ mile
- * Turn left at Middlebury Blvd. (Aspen Business Park)
- * Building 4 is the 1st building on the right. **GOLF: Suite 7 LAWN & SPORTS TURF: Suite 14**

(from West)

- * Take 80 East to Exit 28 (Routes 10 & 46)
- * Take 46 East for 0.9 miles.
- * Bear right at Route 10 East and go 2.8 miles.
- * Turn left at Canfield Ave. (traffic light @ Salerno GMC)
- * Stay on Canfield Ave. for ½ mile
- * Turn left at Middlebury Blvd. (Aspen Business Park)
- * Building 4 is the 1st building on the right. **GOLF: Suite 7 LAWN & SPORTS TURF: Suite 14**

Golf Division (973) 252-6634 Lawn & Sports Turf Division (973) 252-5455

www.GRIturf.com

Contacts/Communication



List

Service ♦ Technical Support ♦ Quality Products

Golf Fax: _____ (973) 252-6630

Lawn & Sports Turf Fax: _____ (973) 252-2881

Ken Kubik: _____ (973) 418-7035
CEO *email: Ken.Kubik@GRIturf.com*

Keith Kubik: _____ (973) 418-7034
President *email: Keith.Kubik@GRIturf.com*

Jay McKenna: _____ (973) 418-7036
Operations Mgr., Golf *email: Jay.McKenna@GRIturf.com*

Gene Huelster: _____ (551) 486-3077
Div. Mgr., Lawn & Sports Turf *email: Gene.Huelster@GRIturf.com*

Tim Kuzio: _____ (315) 525-7760
Asst.Div. Mgr., Lawn & Sports Turf *email: Tim.Kuzio@GRIturf.com*

Gregory Bohus: _____ (609) 313-3518
Systems & Marketing Coordinator *email: Greg.Bohus@GRIturf.com*

Joe Kennedy: _____ (973) 445-8139
Sales & Service Representative, Golf *email: Joe.Kennedy@GRIturf.com*

Steve Chirip: _____ (973) 418-3468
Sales & Service Representative, Golf *email: Steve.Chirip@GRIturf.com*

Ryan Batz: _____ (631) 872-5357
Technical Sales Representative, Golf *email: Ryan.Batz@GRIturf.com*

Ryan Burbridge: _____ (973) 418-7038
Sales & Service Representative, Golf *email: Ryan.Burbridge@GRIturf.com*

Pete Pedrazzi, Sr.: _____ (973) 418-7037
Technical Sales Representative, Golf *email: Plpedraz@optonline.net*

TJ Stevens: _____ (973) 418-7039
Service Representative *email: Thomas.Stevens@GRIturf.com*

Mike Handley: _____ (973) 769-8219
Service Representative *email: Mike.Handley@GRIturf.com*

Zack Holm: _____ (973) 418-0950
Service & Sales Representative, Lawn/Sports *email: Zack.Holm@GRIturf.com*

Golf Division (973) 252-6634 Lawn & Sports Turf Division (973) 252-5455

www.GRIturf.com

Table of Contents



Service ♦ Technical Support ♦ Quality Products

Chemicals

Fungicides	5-7
Insecticides	8-10
Herbicides	11-13
Growth regulators	14
Wetting agents/surfactants	15
Spray tank additives	16
Aquatic materials	16
Animal repellents	55
Tree Care – Mauget	17

Fertilizer, Seed, Amendments

Fertilizer (Lebanon)	18-23
Roots (Lebanon)	24
Granular Amendments (Lebanon)	25
Pre-Emergent Combo (Lebanon)	26-27
Fertilizer & Insecticide (Lebanon)	28
Fertilizer (Andersons)	29-32
Pre-Emergent Combo (Andersons)	32
Fertilizer & Insecticide (Andersons)	33
Nutrite	34
Ocean Organics	35
Fertilizer (liquid – Emerald. Isle)	39
Liquid fertilizer (Growth Products.)	41-42
Seed	44-48
Garden fertilizer	36
Sand/Soil amendments	37-38
Top dressing/divot mix	51-52
Lime & Gypsum	38
Mulch & soil products	54
Athletic field materials	53

Tools & Equipment

Broadcast spreaders	56
Long-handled tools	61-62
Spray equip. / hose	66
Sod staples	67
Curlex erosion control	49-50
Turf covers	59,67
Rakes	63
SandMat bunker liners	58
Golf course accessories	68

Safety

Ear protection	65
Eye protection	65
Spray suits/gloves	65
Respirator/accessories	65

Paint/Landscaping Materials

Marking/stripping paints	60
Marking tape/flags	60
Rope	67
Rain suits	64
Rubber overshoes	64

Services

Turf samples analyzed	69
Soil samples analyzed	69
Partner benefit/incent.	69
Water Testing	69

Appendices

I	Conversion charts
II	Growth Products programs
III	Emerald Isle programs
IV	Chem. info spreadsheets
V	Athletic field dimensions
VI	Mauget Rate Charts
VII	Athletic Field Tips



Lawn & Sports Turf Division (973) 252-5455 Golf Division (973) 252-6634

www.GRIturf.com

Fungicides



Product	Package Size	Description
Banol	2x1 gal/cs or 2x2.5 gal/cs	Pythium's worst nightmare! Cures/prevents
Bayleton 50 WSP	4x4x5.5oz/cs or 50x11oz mini drum	Broad spectrum preventative/curative control
Bayleton FLO	2x2.5 gal/cs	Broad spectrum preventative/curative control
Chipco 26GT	2x2.5 gal/cs	Knocks out mycelium in as little as 24 hours
Chipco Signature	4x5.5 lb./cs	Apply prior to the onset of turf stress
Compass 50W	4x1 lb. or 10 lb drum	High efficacy at low rates, broad spectrum
Interface	2x2.5 gal/cs	Broad spectrum disease control w/Stressguard
ProStar 70 WDG	4x3 lb./cs	Excellent for control of brown patch and fairy ring
Reserve	2x2.5 gal/cs	Broad spectrum disease control w/Stressguard
Tartan	2x2.5 gal/cs	Excellent tool for disease resistance
Triton 70 WDG	6x2 lb./cs	Systemic and absorbed quickly by roots
Triton FLO	4x1 gal/cs	Broad spectrum, unmatched versatility

Product	Package Size	Description	
Banner MAXX II	2x1 gal/cs or 10 gal LinkPak	Effective systemic control at low use rates	
Concert II	2x2.5 gal/cs	Blend of Banner and Daconil active ingredients	
Daconil Action (New)	2x2.5 gal/cs	Daconil plus turf protein booster	
Daconil Ultrex	4x5 lb./cs or 4x10 lb./cs	Best value broad spectrum contact fungicide	
Daconil WeatherStik	2x2.5 gal/cs	Multi-site mode of action, sticks and stays	
Daconil Zn	2x2.5 gal/cs	Tough on algae and disease	
Headway	2x1 gal/cs or 10 gal LinkPak	Potent and efficient control on fairways	
Headway G	30 lb. bag	Potent and efficient control on fairways	
Heritage 50W	1 or 6 lb. container	Premium fungicide for broad-spectrum control	
Heritage G	30 lb. bag	As effective as a spray in a granular form	
Heritage TL	2x1 gal/cs or 10 gal LinkPak	Broad spectrum, systemic, prevent and cure	
Instrata	2x2.5 gal/cs	Snow-mold control that is second to none	
Medallion 50W	4x8x1 oz/cs or 10 lb. bulk pack	Snow molds, brown patch control	
Renown	2x2.5 gal/cs	The power of Daconil and Heritage	
Subdue GR	25 lb. bag	Systemic for use in ornamentals and turf	
Subdue MAXX	2x1 gal/cs or 10 gal LinkPak	Superior control of Pythium blight	

Fungicides



Product	Package Size	Description
Dithane 75 DF	4x12 lb./cs	Preventative control of rust, scab and others
Eagle 20 EW	4x1 gal/cs	Excellent control of dollar spot and brown patch
FORE 80 WP	8x4x1.5 lb./cs	Preventative control of brown patch. Broad spectrum contact fungicide



Product	Package Size	Description
Curalan EG keg	12x2.75 lb. bag/keg	Controls dollar spot, provides residual results
Emerald	10x.49 lb./cs	28 day dollar spot control in one application
Insignia	4x2.4 lb., 36 lb. drum	Suppresses dollar spot, controls key disease. Broad spectrum fungicide
Insignia SC (New)	4x30.5 oz, 4x122oz, 2x2.5 gal/cs, 5 gal jug	Broad spectrum fungicide with plant health benefits
Trinity	2x2.5 gal/cs	Controls a broad spectrum of diseases
Honor	6x3 lb./cs	Dual mode of action, excellent activity on dollar spot
Pillar G	30 lb./cs	Insignia & trinity. SGN 120



Product	Package Size	Description
Affirm	3x2.4 lb./cs	Superior control of snow mold, anthracnose and brown patch
Alude	2x2.5 gal/cs	True systemic - moves up and down the plant tissue
3336 F	2x2.5 gal/cs	Broad spectrum control for turf and ornamentals
3336 GC gg	50 lb.	Specially formulated for greens/tees
3336 G	30 lb. bag	Broad spectrum control for turf and ornamentals
3336 WSB	6x2 lb./cs or 48x1 lb Pro-Pak	Pre-measured, water-soluble pack
3336 Plus	2.5 gal jug	Contains Cleartec activation technology
Protect DF	6x6 lb./cs	Easy to use, dry flowable, broad spectrum control
Spectro 90WDG	4x5 lb./cs or 4x12.5 lb Pro-Pak	Broad spectrum control for turf and ornamentals
Spotrete F	2x2.5 gal/cs	Repels animals from nursery stock, shrubs, and ornamentals
26/36	2x2.5 gal/cs	Versatile turf/ornamental spray, drench or drip application
Torque (New)	5x1 gal/cs	1st tebuconazole labeled turf and ornamental, 3.6 AI per gallon

www.GRIturf.com

Fungicides



Service ♦ Technical Support ♦ Quality Products



Product	Package Size	Description
Bayleton 1G	15 or 25 lb. bag	Broad spectrum preventative/curative control
Fungicide IX	30 lb. bag	Prevents and controls gray snow mold, pink snow mold, pythium Blight, dollar spot, brown patch and copper spot
Fungicide X gran.	52.8 lb. bag	Iprodione, Broad spectrum curative control
Prophesy .72G on DG PRO	25 or 40 lb. bag	Propiconazole, Broad spectrum systemic



Product	Package Size	Description
Daconil 5G	20 lb. bag	Excellent tolerance, even in hot/humid weather
Eagle .62G	30 lb. bag	Systemic prevention and control of turf disease



Product	Package Size	Description
Companion Biological Fungicide	2.5 gal box, 5 gal box, 30 gal drum	Companion is the only patented liquid biological fungicide on the market. It improves nutrient uptake & stimulates healthier roots.

FMC Professional Solutions

Product	Package Size	Description
Segway	39.2 oz/bottle	Stops Pythium in its tracks



(2 x 2 1/2 gal/cs)

- Control a wide array of foliar and soil diseases
- Multi-site mode of action
- Broad spectrum for bacterial and fungal disease
- Ideal resistance management tool
- 30 Natural Bio chemicals

Also Available: Zerotol and Terazol

www.GRIturf.com



Junction DF
(6 x 6 lb-bag/case)

Combo
Fungicide/Bactericide

Brown Patch, Dollar
Spot, Powdery Mildew,
Red Thread

Insecticides



Service ♦ Technical Support ♦ Quality Products



Product	Package Size	Description
Allectus GC SC	4x1 gal/cs	Liquid formulation for golf courses
Allectus SC	4x1 gal/cs	Liquid formulation for turf professionals
Coretect	4x250 tabs/cs	Controls insects in new and established trees
Dylox 6.2G	30 lb. bag	Curative, for surface and soil insects/grubs, results w/in 24hrs.
Dylox 420 SL	2x2.5 gal/cs	Controls white grubs and other insects in turf
MaxForce FC ant bait	8x2 lb. jug/cs	Control even in hard to reach places
Merit .5G	30 lb. bag	Longest lasting broad spectrum grub control product available
Merit 75 WSP	4x4x1.6 oz/cs, 110x1.6 oz/drum	Broad-spectrum, systemic
Sevin SL	2x2.5 gal/cs	Broad-spectrum, control of more than 130 pests
Tempo Ultra GC	8x900 ml/cs	For golf course use, quick knockdown of pests
Tempo Ultra SC	8x900 ml/cs	For other non-golf course applications



Product	Package Size	Description
Conserve SC	4x1 qt/cs	Kills 1-3 days, activity on ingestion and contact, IPM safe



Product	Package Size	Description
Avid .15 EC	4x1 qt/cs, 4x1 gal/cs	#1 insecticide for mites & leaf miners
Meridian 25 WG	8x4 oz/cs, 4x17 oz/cs, or 408 oz/cs	Quick, effective, curative
Meridian .33G	40 lb. bag	A convenient granular formulation
Scimitar GC	8x1 qt/cs	Fast acting, long residual, easy on the environment

Lawn & Sports Turf Division (973) 252-5455 Golf Division (973) 252-6634

www.GRIturf.com

Insecticides



Service ♦ Technical Support ♦ Quality Products



Product	Package Size	Description
Bifenthrin .1%G HDG	30 lb. bag	Controls ants, chinch bugs
Sevin G	30 lb. bag	Post control of surface/subsurface insects



Product	Package Size	Description
Provaunt	8x10 oz/cs	Control of ABW, cutworms & more
Acelypryn	4x64 oz/cs	Features a novel mode of action that impacts the insect's muscles
Acelypryn G	25 lb. bag	Turf caterpillars, white grubs, European crane flies, billbugs



Product	Package Size	Description
Eradicoat Gypsy Moth Control System	Kit or 1 gal bottle	Great control on gypsy moths vs. other conventional tree wrap systems



Product	Package Size	Description
Tristar 30SG	2 lb cont.	Odorless, fast acting, foliar insecticide
Sentry		Mosquito control around aquatic areas
Bounty	4x1 gal/cs	Preventative, early curative, turf & ornamental, long residual control



Product	Package Size	Description
Nematec	4 gallon kit	Nematode control



Product	Package Size	Description
Prosect .15% Bifenthrin on DG Pro 100	50 lb. bag	Controls ants, chinch bugs
DuoCide insect Control on DG Pro	40 lb. bag	Controls surface and subsurface insects

Lawn & Sports Turf Division (973) 252-5455 Golf Division (973) 252-6634

www.GRIturf.com

Insecticides



Service ♦ Technical Support ♦ Quality Products

FMC Professional Solutions

Product	Package Size	Description
Talstar PL	25 lb. bag	Provides 2-4 months of powerful protection
Talstar P	1 pint, 1 quart, 0.75 gal, 1 gal	Talstar Professional achieves long-lasting control of over 75 pests
Talstar EZ	25 lb. bag	Long-lasting control of surface-feeding pests with a breakthrough granular formulation.
Talstar Xtra	25 lb. bag	A solution for outdoor pest control that's faster than you ever thought possible.

Lawn & Sports Turf Division (973) 252-5455 Golf Division (973) 252-6634

www.GRIturf.com

Herbicides



Service ♦ Technical Support ♦ Quality Products



Product	Package Size	Description
Acclaim Extra	4x1 gal/cs	Controls all stages of crabgrass
Finale	2x2.5 gal/cs	Controls broad spectrum of emerged grass/broadleaf weeds
Prograss	2x2.5 gal/cs	Controls poa annua in cool season grasses, pre and post emergence



Product	Package Size	Description
Barricade 4FL	4x1 gal/cs or 10 gal LinkPak	Pre-emergence, low rate, season long control
Barricade 65 WDG	5x10 lb/cs	Pre-emergence, low rate, season long control
Pennant Magnum	4x1 gal/cs	Superior control of labeled weeds, alone or tank mix
Reward	4x1 gal/cs or 2x2.5 gal.cs	Broadest spectrum aquatic herbicide available
Tenacity	8oz bottle or 4x1 gal/cs	Revolutionary systemic, selective pre and post-emergent
Fusilade II	8x1 qt/cs	Selective control of grassy weeds in a number of areas
Departure	2x2.5 or 20 gal drum	Non-selective, controls over 170 annual/perennial weeds



Product	Package Size	Description
Octane	12x8 oz/cs	Visual effect in 24-48 hrs. - enhances other herbicides and takes out broadleaf weeds in a matter of days

FMC Professional Solutions

Product	Package Size	Description
Dismiss	6 oz or 64 oz bottle	Controls nutsedge and Kyllinga
Quicksilver	4x8 oz/carton	Silvery moss control
Echelon	4x1 gal/cs	Poa & crabgrass control in cool season grass
Solitare	6x1 lb./cs	Post emergent control for crabgrass, sedges, & BLW

Lawn & Sports Turf Division (973) 252-5455 Golf Division (973) 252-6634

www.GRIturf.com

Herbicides



Service ♦ Technical Support ♦ Quality Products



Product	Package Size	Description
Confront	4x1 gal/cs	Broad spectrum, post-emergent control in 1 application
Dimension 2 EW	2x2.5 gal/cs	Excellent pre-emerge and early post emerge control of crabgrass
Dimension Ultra 40WP	8x8x5 oz/cs	Excellent pre-emerge and early post emerge control of crabgrass
Gallery 75 DF	4x1 lb./cs	Prevents growth of 95 species BLW's for up to 8 months
Lontrel	12x1 qt/cs	Excellent safety to turf; restricted use- non-residential
Turflon Ester Ultra	2x2.5 gal/cs	Broad spectrum post emerge
Snapshot 2.5G	50 lb. bag	8 month control on broadleaf weeds (ornamental use)



Product	Package Size	Description
Drive XLR8	4x64 oz/cs	Quicker uptake by the plant, faster, more effective weed control
Pendulum 2G	40 lb. bag	Controls weeds as they germinate, over 45 grass/BLW's
Pendulum Aquacap	2x2.5 gal/cs or 15 gal	Better crabgrass control, easy handle/mix/clean
Pendulum 3.3EC	2x2.5 gal/cs or 30 gal	Classic pre-emergent
Freehand 1.75G	50 lb. bag	2 active ingredients for broader range of control
Segment	1 gal	Sethoxydim, broad spectrum control
Tower	4x64 oz	Pre-emergent control of over 50 small seed weeds in field grown and landscape ornamentals
Onetime	4x1 gal/cs	Post emergent control of BLW and crabgrass

Product	Package Size	Description
Preen Plus	30 lb. bag	Ornamental and bed pre-emergent herbicide
Treflan 5G	40 lb. bag	Granular, pre-emergent herbicide used in many sites in residential, commercial industrial landscapes. Available as HDG or Biodac.
Tupersan 4.6G	20 lb. bag	Pre-emergent for crabgrass. Safe on seeded areas.
Trimec	20 lb. bag	Post-emergent broad leaf weed control



Lawn & Sports Turf Division (973) 252-5455 Golf Division (973) 252-6634

www.GRIturf.com

Herbicides



Service ♦ Technical Support ♦ Quality Products



Product	Package Size	Description
KOG Weed Control w/Dicamba on DG Pro	35.5 lb. bag	Goose, crabgrass, & broad leaf weed control
Snapshot 2.5DG	25 lb. bag	8 month control on broadleaf weeds (ornamental use)
0.125% Dimension on DGPro	50 lb. bag	Available in SGN 150
0.25% Dimension on DGPro	25 lb. bag	Available in SGN100 & 150
2.5% Balan on DGPro	40 lb. bag	Available in SGN 150



Product	Package Size	Description
Trimec Classic	2x2.5 gal/cs	Post-emergent broadleaf control in turf
Trimec Plus	2x2.5 gal/cs	Post-emergent control of crabgrass & nutsedge
Trimec Bentgrass	2x2.5 gal/cs	Post-emergent broadleaf control in bentgrass
Surge	2x2.5 gal/cs	Water based, fast control in warmer weather, post-emergent
SpeedZone	2x2.5 gal/cs	Ester based, post-emergent broadleaf control, rapid visual results
Q4 Plus	2x2.5 gal/cs	BLW and crabgrass control, plus yellow nutsedge suppression
Trimec 992	2x2.5 gal/cs	Post-emergent broadleaf control in turf
Drums available on PBI products		

Other available herbicides include: Banvel, Bensumec, Corsair, Sedgehammer, Surflan AS T/O, Scythe, Brushmaster, Tupersan WP, and Velocity. Call us for availability and prices.

Lawn & Sports Turf Division (973) 252-5455 Golf Division (973) 252-6634

www.GRIturf.com

Growth Regulators



Service ♦ Technical Support ♦ Quality Products



Product	Package Size	Description
Primo MAXX	2x1 gal/cs or 10 gal LinkPak	Pre-stress conditioning for your turf
Trimmit 2SC	4x1 gal/cs or 2x2.5 gal/cs	Slows vertical growth poa-annua in 3-10 days. Reduces mowing and clippings and suppresses poa.



Product	Package Size	Description
Cutless 0.33G	21 lb/pail	Less pruning, compact growth form on landscape plants
Cutless MEC	4x1 gal/cs, 2x2.5 gal/cs, 5 gal/pail	50% reduction in mowing/clippings. Poa suppression.
Cutless 50W	30 lb SuperPack	50% reduction in mowing/clippings. Poa suppression.
Edgeless	12x8 oz bottles/cs	Reduced growth around edges of garden beds and fences
Legacy	2x2.5 gal/cs or 5 gal/pail	Enhanced growth suppression, stops encroaching Poa



Product	Package Size	Description
Proxy	2x2.5 gal/cs	Poa seed head suppression and long term growth regulation



Product	Package Size	Description
Governor G SGN 75	32 lb. bag	Reduces turf clippings up to 50%, Trinexapac-Ethyl



Product	Package Size	Description
Atrimmec	1 gal bottle or 1 quart bottle	Reduces pruning by 50% or more
Embark 2-S	1 gal bottle	Economic growth regulation of turf
Embark T & O	1 gal bottle	Eliminate seed head development

Lawn & Sports Turf Division (973) 252-5455 Golf Division (973) 252-6634

www.GRIturf.com

Surfactants



Service ♦ Technical Support ♦ Quality Products



Product	Package Size	Description
Advantage Soil Wetting Agent Pellets	6x12 /cs	Temporary relief of local dry spots
Advantage Applicator	Sold individually	Used to apply pellets; handles high pressure
Aqueduct L	5 gal pail, 30 & 55 gal drum	Recovery of dry spots, reduces turf wilt
Aqueduct SWDG	50 lb. bag	Blended non-ionic soil surfactant
Dispatch Injectable	5,30, & 55 gal drum	Reduces water use, promotes better turf performance
Dispatch Sprayable	2x2.5 gal/cs & 30gal drum	Improves infiltration penetration of irrigation and rainfall
Infil TRx	55 gal or 260 gal drum	Blended, non-ionic soil wetting agent
Primer Select	5 gal pail or 30 gal drum	Prevents water repellency, promotes turf uniformity
Primer Select SWDG	50 lb. bag	Enhanced matrix flow soil surfactants
Revolution	2x2.5 gal/cs & 30gal drum	Enhanced turf resilience and stress tolerance
Revolution SWDG	50 lb. bag	Spreadable, water-dispersible granular formulation
Sixteen90	5,30, & 55 gal drum	90-day protection against water repellency problems
Sixteen90	40 lb. bag	Spreadable granular formulation
Caltisral	5 or 55 gal drum	Increases solubility of natural and applied Ca and Mg
Leafshield	1 gal or 5 gal pail	Protects against desiccation and maintains foliage quality

Pumps are also available for the drum packaged products.

SURF SIDE 37

- Doesn't burn, discolor, or root prune
- Comes in 5 gal, 30 gal, or 52 gal drums.



- Reduces excess leaf moisture caused by dew, guttation, rain, irrigation and frost
- Promotes faster drying after introduction of moisture
- Adheres directly to leaf surface
Available in 5 and 30 gallon pails

Lawn & Sports Turf Division (973) 252-5455 Golf Division (973) 252-6634

www.GRIturf.com



Service ♦ Technical Support ♦ Quality Products

Colorants/Tank Additives

Product	Package Size	Description
Clearspray T/O Defoamer	2x2.5 gal/cs	Spreader sticker, anti-desiccant
Tank Cleaner	12x1 qt/cs	Water dispersible, anti-foaming agent
D-Tox	12x1 qt/cs	Cleans spray equipment while inhibiting rust
Limestone F	2x2.5 gal/cs	Act. Charcoal used to decontaminate soils after chemical spill
Grass Greenzit	2x2.5 gal/cs	Liquid Dolomitic lime- extremely fine particle size allows for rapid onset of pH modification
Tree Greenzit	2x2.5 gal/cs	Turf colorant
Blazon Blue Indicator	2x2.5 gal/cs	Tree colorant
Blazon Green Indicator	2x2.5 gal/cs	Spray indicator pattern
Bigfoot WSB	4x1 gal/cs	Spray indicator pattern
Foamy	40 WSB/pail	Blue spray die in WSB formula
Spread-it	4x1 gal/cs	High density foam marker
Zap defoamer	4x1 gal/cs	Nonionic surfactant
	4x3x16 oz/cs	Anti-foaming agent
	3x16 oz/carton	

Aquatic Material

Product	Package Size	Description
Radiance	4x1 gal/cs, 2x2.5 gal/cs	Prevents algae blooms, self-dispersing
BacMan	25 lb/pail	Maintains natural microbial balance for clear and healthy ponds
Reward	4x1 gal/cs, 2x2.5 gal/cs	Landscape & aquatic herbicide
Phoslock	40 lb pail	Removes phosphorous from water
Mirage Blue	4x1 gal/cs	Liquid colorant for use in lakes and ponds
Mirage Black	4x1 gal/cs	Liquid colorant for use in lakes and ponds

Lawn & Sports Turf Division (973) 252-5455 Golf Division (973) 252-6634

www.GRIturf.com



Service ♦ Technical Support ♦ Quality Products



Product	Package Size	Description
<u>FERTILIZERS</u>		
Stemix Plus	24x6 ml- quarter flat	Chelated minerals with a very low salt index and elevated magnesium and calcium, designed to stimulate both foliar and root growth.
Vigor 53	24x7.5 ml- quarter flat	Potassium-buffered Phosphorous Acid material, providing potassium nutrition in addition to phosphite technology.
Inject-A-Min Manganese	24x6 ml- quarter flat	A micro-nutrient formulation containing manganese sulfate for use on palms, maples, citrus and other tree species growing in alkaline soils.
<u>FUNGICIDES</u>		
Fungisol	24x6 ml- quarter flat	A proprietary fungicide that is effective for more than 30 diseases on a large variety of ornamental, conifer, palms and other trees. Contains Debacarb.
ArborFos	24x10 ml- quarter flat	A phosphite formulation fungicide that inhibits fungal growth through stimulation of the plant's own natural defense systems.
Tebuject 16	24x4 ml or 6ml- quarter flat	A Triazole fungicide that inhibits sterols synthesis necessary for fungal development.
Mycoject ULTRA	24x6 ml- quarter flat	A micro-injected antibiotic with improved solubility using Oxytetracycline Hydrochloride.
<u>INSECTICIDE</u>		
Abacide 2	24x3 ml or 4ml- quarter flat	A higher concentrated abamectin insecticide for use on forest, woodland, Christmas and ornamental trees.
Imicide	24x2 ml or 3ml- quarter flat	Used in prevention and eradication programs for Asian and Citrus Longhorned Beetles.
Inject-A-Cide B *	24x2 ml- quarter flat	A restricted-use Insecticide providing an extremely rapid uptake into and throughout the tree, producing an immediate effect on insects.

Instructional materials, manuals, drill bits & accessories

*** Bidrin – hazardous – special handling**

Lawn & Sports Turf Division (973) 252-5455 Golf Division (973) 252-6634

www.GRIturf.com

Granular Fertilizer



Service ♦ Technical Support ♦ Quality Products

Available lines include:



Country Club

The premier homogenous methylene urea fertilizer line that combines traditional high-WIN products with Lebanon Turf's cutting edge Composite Technology® granulation process. This is a highly efficient nitrogen package.

NX-PRO

An innovative fertilizer line that offers a variety of nitrogen resources, such as Meth-Ex 40, MESA® or a combination with Expo's extended potassium sulfate.

ProScape

A line that offers the ultimate in uniform distribution and coverage with premium blends featuring the latest technology in controlled release nutrient sources including the Mesa, Meth Ex 40 and Expo technologies.

Lebanon Pro

A line of products created for just about any landscape situation. It includes a wide variety of high-quality, cost-effective, blended fertilizers, fertilizer control combinations and granular control products.

ROOTS

ROOTS uses advanced bio stimulants, biological micronutrients and natural fertilizer technologies to improve plant growth and health. Used on golf courses and sports turf, as well as for lawn care, to provide consistent color response, improved turf density and improved root mass.



The Emerald Isle Solutions™ complete Nutrition Programs provide both sea plant extract and complete True Foliar™ nutrients to increase plant physiological fitness and produce superior turf quality, even under the most stressful conditions.



The Plant Health Care Group is a leading provider of naturally-based products for agriculture, commercial landscaping and land reclamation industries. This innovative line of products creates both environmental and economic benefits for customers and capitalizes on long-term trends toward natural systems and biological solutions to promote plant health and growth.

Lawn & Sports Turf Division (973) 252-5455 Golf Division (973) 252-6634

www.GRIturf.com

Granular Fertilizer



Service ♦ Technical Support ♦ Quality Products

Lebanon's fertilizer technologies:



The most efficient, high activity methylene urea complex available today. Same-day color with minimal surge growth and maximized long-term response.

Typical nitrogen release: 8-10 weeks



Designed to extend the benefits of potassium. It is a unique, patented, single particle made by combining methylene urea and potassium sulfate.

Typical nitrogen release: 10-14 weeks Typical potassium release: 6-8 weeks



The first nitrogen source to combine ammonium sulfate with methylene urea in a single particle. It does not rely on a coating or lose its slow-release attributes when cracked.

Typical nitrogen release: 6-9 weeks



Fertilizer technology that provides a cost-effective source of nitrogen by reducing nitrogen volatility. LSN maximizes nitrogen availability and offers an agronomic alternative to other slow-release nitrogen sources. Designed to deliver nitrogen consistently and efficiently, LSN is the practical and effective choice of nitrogen sources.

Visible results for 10-11 weeks after application



GREENSMART Enhanced Efficiency Fertilizer™ is a carefully formulated microbiological process designed to maximize metabolic activity. When added to fertilizer blends, GREENSMART Enhanced Efficiency Fertilizer™ has been shown to significantly enhance nutrient availability and increase plant uptake resulting in consistent and measurable savings in fertilizer costs.

Typical nitrogen release: 8-10 weeks

Lawn & Sports Turf Division (973) 252-5455 Golf Division (973) 252-6634

www.GRIturf.com

Granular Fertilizer



Service ♦ Technical Support ♦ Quality Products

Country Club

Fertilizers	Pkg Size	CRN	Other Nutrients	Coverage @ 1# N
SGN 100 MICRO GREENS GRADE			48 bags/pallet	
C.C. 12-0-18 Ammoniacal High-K	50 lb. bag		Mg, S, Fe, Mn	9,000ft ^{2**}
C.C. 12-24-8 Ammoniacal	50 lb. bag		1% Fe	12,000 ft ^{2*}
C.C. 18-3-18	50 lb. bag	4.5 WIN	Mg, S, Fe, Mn	9,000 ft ²
C.C. 19-0-19 3.6 WIN 1.3%Fe	50 lb. bag	3.6 WIN	1.3% Fe	9,500 ft ²
C.C. 24-0-10	50 lb. bag	5.4 WIN		12,000 ft ²
SGN 145 MID-SIZE GRADE			48 bags/pallet	
C.C. 8-4-24	50 lb. bag	1.6 WIN	Mg, S, Fe, Mn	12,000 ft ^{2**}
C.C. 10-18-18	50 lb. bag	1.8 WIN	Mg, S, Fe, Mn	9,000 ft ^{2***}
C.C. 16-4-8 Ammoniacal	50 lb. bag		S, Fe, Mn	8,000 ft ²
C.C. 18-4-12	50 lb. bag	3.1 WIN	Mg, S, Fe, Mn	9,000 ft ²
C.C. 26-0-5	50 lb. bag	8.0 WIN		13,000 ft ²
SGN 195 FAIRWAY GRADE			48 bags/pallet	
C.C. 13-25-12 All Mineral Starter	50 lb. bag		S, Fe, Cl	12,500 ft ^{2*}
C.C. 16-8-8 Ammoniacal Fairway	50 lb. bag		S, Cl	8,000 ft ²
C.C. 19-0-9	50 lb. bag	5.5 WIN	K, Mg, Mn, Fe, S	9,500 ft ²
C.C. 21-3-18	50 lb. bag	5.5 WIN	Mg, S, Fe, Mn	10,500 ft ²

Key

- * coverage based on Phosphorous (P)
- ** coverage based on Potassium (K)
- *** coverage based on Phosphorous/Potassium (P/K)

Lawn & Sports Turf Division (973) 252-5455 Golf Division (973) 252-6634

www.GRIturf.com

Granular Fertilizer



Service ♦ Technical Support ♦ Quality Products



Fertilizers	Pkg Size	CRN	Other	Coverage @ 1# N
SGN 100 MIRCRO GREENS GRADE		48 bags/pallet		
NX-PRO 16-0-30	50 lb. bag	2.5 WIN	S, Fe, Mn	15,000 ft ² **
NX-PRO 17-0-5	50 lb. bag	50% Meth-Ex		8,500 ft ²
NX-PRO 23-0-22	50 lb. bag	72% Meth-Ex 4.8 WIN	S, Fe, Mn, Cl	11,500 ft ²
SGN 145 MID-SIZE GRADE		48 bags/pallet		
NX-PRO 17-0-17	50 lb. bag	67% Meth-Ex 40	S, Fe, Cl	8,500 ft ²
NX-PRO 19-0-19	50 lb. bag	100% MESA	S, 3% Fe	9,500 ft ²
NX-PRO 22-0-16	50 lb. bag	65% Expo K 24% Mesa		11,000 ft ²
NX-PRO 25-0-15 (45 bags/pallet)	50 lb. bag	50% Meth-Ex	S, Fe, Cl	12,500 ft ²
SGN 195 FAIRWAY GRADE		48 bags/pallet		
NX-PRO 17-0-20	50 lb. bag	50% Expo K 67% CRN	S, Fe, Cl	10,000 ft ² **
NX-PRO 21-0-10	50 lb. bag	58% MESA	S	10,500 ft ²
NX-PRO 22-0-12	50 lb. bag	50% Meth-Ex	S	11,000 ft ²
NX-PRO 29-0-10	50 lb. bag	36% MESA	S, CL	14,500 ft ²
NX PRO 27-0-5	50 lb. bag	86% MESA 14% Expo		13,500 ft ²
NX-PRO 28-0-14	50 lb. bag	69% Meth-Ex/Expo	S, Fe	14,000 ft ²

Key

- * coverage based on Phosphorous (P)
- ** coverage based on Potassium (K)
- *** coverage based on Phosphorous/Potassium (P/K)

Lawn & Sports Turf Division (973) 252-5455 Golf Division (973) 252-6634

www.GRIturf.com

Granular Fertilizer



Service ♦ Technical Support ♦ Quality Products



Fertilizers	Pkg Size	CRN	Other	Coverage @ 1# N
-------------	----------	-----	-------	-----------------

LANDSCAPE & FAIRWAY GRADE	48 bags/pallet			
PS 12-25-12 HOM AM (60 bags/pallet)	40 lb. bag	AM	S, 0.5% Fe, Cl	10,000 ft ^{2*}
PS 16-25-12	50 lb. bag	25% MethEx 40, MESA	S, K	12,500 ft ^{2*}
PS 19-0-5 w/GreenSmart	50 lb. bag	40% MESA	S, Cl	9,500 ft ²
PS 19-0-19	50 lb. bag	62% MESA	3% Fe, S, Zn	9,500 ft ²
PS 20-0-10	50 lb. bag	40% MESA	1% Fe, S, Cl	10,000 ft ²
PS 20-0-5	50 lb. bag	30% MESA	1% Fe, S, Cl	10,000 ft ²
PS 20-0-25 K	50 lb. bag	100% EXPO 85% CRN SOP	S, K	12,500 ft ^{2**}
PS 24-0-6 w/GreenSmart	50 lb. bag	30% MESA	S, Cl	12,000 ft ²
PS 25-0-12	50 lb. bag	34% CRN MESA/EXPO	S, Cl	12,500 ft ²
PS 25-0-5	50 lb. bag	51% MESA	1% Fe	12,500 ft ²
PS 30-0-0	50 lb. bag	100% MESA	S	15,000 ft ²
PS 32 0 6	50 lb. bag	30% MESA	S, Cl	16,000 ft ²
PS 40-0-0	50 lb. bag	100% Meth-Ex		20,000 ft ²
MID-SIZE GREENS GRADE	48 bags/pallet			
PS 20-0-25 Homog.	50 lb. bag	100% EXPO K, 85% CRN,	S, K	12,500 ft ^{2**}
PS 17-0-17 w/GreenSmart	50 lb. bag	100% MESA		8,500 ft ²
PS 20-0-10 w/GreenSmart	50 lb. bag	60% MESA		10,000 ft ²
PS 22-0-22	50 lb. bag	100% Meth-EX 40 SOP	S	11,000 ft ²
PS 40-0-0 (40 bags/pallet)	50 lb. bag	100% MethEx		20,000 ft ²

Key

- * coverage based on Phosphorous (P)
- ** coverage based on Potassium (K)
- *** coverage based on Phosphorous/Potassium (P/K)

Lawn & Sports Turf Division (973) 252-5455 Golf Division (973) 252-6634

www.GRIturf.com

Granular Fertilizer



Service ♦ Technical Support ♦ Quality Products



Fertilizers	Pkg Size	CRN	Other	Coverage @ 1# N
ORGANIC BASE LANDSCAPE GRADE		48 bags/pallet		
Leb Pro 5-5-0 Organic Biosolid	50 lb. bag	Organic		2,500 ft ²
PS 5-10-5 Starter (45 bags/pal) w/Organic Biosolid	50 lb. bag	Organic	K, Ca, Cl	5,000 ft ^{2*}
PS 6-1-11	50 lb. bag	Organic Base, MESA,	7% Complex Fe, S, Cl	5,500 ft ^{2**}
PS 9-2-5	50 lb. bag	Organic Base, MESA	6% Complex Fe, S, Cl	4,500 ft ²
PS 15-2-8	50 lb. bag	Organic Base	S, 1% Fe, Cl	7,500 ft ²
GREENSKEEPER		48 bags/pallet		
GK 10-6-4	50 lb. bag	58% CRN	1% Fe	5,000 ft ²
GK 20-0-8 (Homog.)	50 lb. bag	57% CRN	1% Fe	10,000 ft ²
ORNAMENTAL BEDS				
Woodace 14-14-14	40 lb. bag			

Lebanon Pro

Fertilizers	Pkg Size	CRN	Other	Coverage @ 1# N
LANDSCAPE & FAIRWAY SGN 195-210		45 bags/pallet		
0-44-0 Super Phosphate (40 bags/pallet)	25 lb. bag			11,000 ft ²
8-16-8 AM w/GreenSmart	50 lb. bag	All Mineral	K, Cl	8,000 ft ^{2*}
10-20-15 (60 bags/pallet)	40 lb. bag	All Mineral	1% Fe	8000 ft ^{2*}
19-0-5 w/ GreenSmart	50 lb. bag	100% LSN	Cl, nutrilife	9,500 ft ²
20-0-5	50 lb. bag	25% SCU	1% Fe, S, Cl	10,000 ft ²
24-0-10	50 lb. bag	100% LSN	Cl	12,000 ft ²
24-0-10 w/ GreenSmart	50 lb. bag	100% LSN	Cl, nutrilife	12,000 ft ²
28-0-10	50 lb. bag	50% SCU	S, Fe	14,000 ft ²
28-3-10	50 lb. bag	50% SCU	3% Fe	14,000 ft ²
30-0-10	50 lb. bag	50% SCU	2% Fe SOP	15,000 ft ²



Service ♦ Technical Support ♦ Quality Products

Products	Size	Description
dryROOTS®	25 lb. bag	Org Fertilizer 3-3-3, planting biostimulant
endoRoots® Fine Granular	50 lb. bag	Speeds up grow-in, rooting stimulant
M-ROOTS®	25 lb. bag	Planting biostimulant with mycorrhizae
ROOTS® plant Food 7-7-7 coarse	40 lb. bag	4% Fe, stimulates root growth, controlled release
ROOTS® Turf Food 7-7-7 Fine	50 lb. bag	0.7# N Coverage per bag 14,000 ft ²
ROOTS® Turf Food 8-2-6 Coarse	50 lb. bag	Covers 4,000 – 8,000 ft ²
ROOTS® Turf Food 14-3-5 Fine	50 lb. bag	0.7# N Coverage per bag 9,525 ft ²
ROOTS® Turf Food 15-3-8 Fine	50 lb. bag	0.7# N Coverage per bag 10,700 ft ²
MYCOplex™ Media Amendment	50 lb. bag	Mycorrhizae for increased nutrient uptake
MYCO spikes® Micorrhizae Fert Spikes	5oz spikes/5 or 100 ct.	Slow release of vital nutrients
MYCOtabs® Micorrhizae fert tabs	500 x 21g tabs	Pre measured tablet slowly releases vital nutrients
Bio-B Plus® Microbial Soil Inoculant	2.5 gal	Improves soil structure, fertility and plant productivity
EcoGuard® Biofungicide	2.5 or 275 gal	Dollar spot & anthracnose control, low risk pesticide.
ROOTS® Concentrate Rooting Stimulant	2.5 or 55 gal	Rapid root growth, quick regeneration, successful transplant aid
TRANSPLANT 1 STEP™	4 oz or 27 lb. bag	Reduces planting/transplant losses. For low moisture environments
TurfVigor® Microbial Fertilizer	2.5 gal	Maximizes nutrient uptake, improves color & quality, maintains root mass under stress conditions
endoROOTS® granular Mycorrhizal Rooting Stimulant	50 lb. bag	Speeds up grow-in and establishment, increases turf density, improves recovery rate from aeration

Rates vary on where and on what you are applying the product to.

Call for complete line

Lawn & Sports Turf Division (973) 252-5455 Golf Division (973) 252-6634

www.GRIturf.com

Granular Amendments



Service ♦ Technical Support ♦ Quality Products



The difference between a healthy, managed thatch layer and an unhealthy excessive layer is the rate of conversion of fibrous material to humus. Microorganisms convert thatch to humus. Thatch-X is a completely unique microbiological thatch management material. It works by mineralizing thatch into humus at a rate of conversion sufficient to prevent excessive thatch accumulations. And it does it *better, faster, and cheaper* than any competitive material on the market.



Improves fertility and holds moisture and nutrients in the root zone. Reduces leaching, enhances fertilization, fastest decomposing organic.



GroWin (5-1-2) provides accelerated establishment when building or rebuilding cool or warm season turf, as it benefits both cool and warm season grasses. Whether seeded, sodded, or sprigged, GroWin significantly improves both leaf & root growth, enhances stress tolerance significantly and is cost effective and economical.

Plant Health Care

Fertilizers

Pkg Size

PHC for Flower 12-16-12
PHC for Trees 11-22-22
Healthy Start 3-4-3

8 lb. bag
40 lb. bag
25 lb. bag

Call for complete line

Lawn & Sports Turf Division (973) 252-5455 Golf Division (973) 252-6634

www.GRIturf.com

ProScape & Lebanon Pro

Fertilizers	Pkg Size	CRN	Other	Coverage
DIMENSION*				
ProScape 5-0-20 w/Dimension 0.13% AM (Hom)	50 lb. bag	All Mineral	S, Cl	11,364 ft ²
ProScape 15-0-5 w/Dimension 0.13%	50 lb. bag	40% MESA	Cl	11,364 ft ²
ProScape 16-0-8 w/Dimension 0.19%	50 lb. bag	43% MESA	2% Fe,Cl	16,667 ft ²
Leb Pro 17-0-5 w/Dimension 0.13%	50 lb. bag	25% SCU	S, Cl	11,364 ft ²
ProScape 18-0-5 w/Dimension 0.09%	50 lb. bag	25% MESA	S, Cl	7,813 ft ²
ProScape 20-0-8 w/Dim 0.13% (Hom)	50 lb. bag	40% MESA	Fe, Cl	11,364 ft ²
ProScape 22-0-6 w/Dimension 0.13%	50 lb. bag	40% MESA	S, Cl	11,364 ft ²
Lebanon Dimension 0.13% (10-6-4)	40 lb. bag			11,364 ft ²
BARRICADE**				
Leb Pro 0-0-15 w/Barricade 0.38%	50 lb. bag		Cl, SOP	12,733 ft ²
ProScape 5-5-20 w/Barricade 0.38% (Hom.)	50 lb. bag	All mineral	S, Cl	12,733 ft ²
ProScape 16-0-8 w/Barricade 0.43%	50 lb. bag	1.4 WIN	S, Cl	14,408 ft ²
ProScape 16-0-8 w/Barricade 0.43%	50 lb. bag	43% MESA	S, Cl	14,408 ft ²
Leb Pro 19-3-5 w/Barricade 0.38%	50 lb. bag	25% SCU	Cl	12,733 ft ²
ProScape 20-0-8 w/0.29% Barr. (Hom)	50 lb. bag	53% CRN	K, Cl	9,717 ft ²
TUPERSAN				
ProScape 12-24-11 w/Tupersan 3.71% (rates vary depending on new seed or existing seed)	25 lb. bag	12% AM	S, 0.5% Fe, Cl	5-10,000 ft ²

* Dimension coverage based on .25 lb/ai

** Barricade coverage based on .65 lb/ai

Lawn & Sports Turf Division (973) 252-5455 Golf Division (973) 252-6634

www.GRIturf.com

Pre-Emergent Combinations



Service ♦ Technical Support ♦ Quality Products

ProScape & Lebanon Pro

Fertilizers	Pkg Size	CRN	Other	Coverage
CONFRONT				
ProScape 0-0-15 w/Confront 3(closeout)	40 lb. bag		SOP	11,430 ft ²
ProScape 19-0-7 w/Confront 0.68% *	40 lb. bag	39% CRN	1% Fe, Cl	12,000 ft ²
LOCK UP				
ProScape 0-0-7 w/LockUp SGN 145	40 lb. bag		SOP	10,000 ft ²
ProScape 19-0-6 w/LockUp	40 lb. bag	33% MESA		10,500 ft ²
TRIMEC				
ProScape 20-0-7 w/Trimec	40 lb. bag	25% METH-EX		10,000 ft ²
ProScape 20-0-8 w/Trimec	50 lb. bag	53% CRN		14,000 ft ²
Leb Pro 25-0-8 w/Trimec	50 lb. bag	40% SCU	MOP, S, Cl	14,000 ft ²
PRE + POST EMERGENT COMBOS				
ProScape 19-0-6 w/Dimension 0.145%+Confront 3	40 lb. bag	4.0 WIN	S, Cl	10,000 ft ²
ProScape 19-3-9 w/TEAM 1.24%+Confront 0.68% *	50 lb. bag	3.6 WIN	Fe, Cl	14,000 ft ²
ProScape 19-0-6 w/Dimension 0.16% + Trimec	40 lb. bag	33% MESA	MOP	11,428 ft ²

*** Non-Residential use**

Lawn & Sports Turf Division (973) 252-5455 Golf Division (973) 252-6634

www.GRIturf.com

Fertilizer & Insecticides



Service ♦ Technical Support ♦ Quality Products

ProScape & Lebanon Pro

Fertilizer and Insecticide Pkg Size CRN Other Coverage

MERIT

Leb Pro 0-0-7 w/ 0.2% Merit	50 lb. bag		SOP, Cl	12,500 ft ²
ProScape 15-2-5 w/Merit 0.2%	40 lb. bag	40% MESA	Cl	10,000 ft ²
ProScape 20-0-5 w/0.2% Merit	50 lb. bag	30% MESA	S	12,500 ft ²
Leb Pro 23-0-7 w/Merit 0.2%	40 lb. bag	40% SCU	S, Cl	10,000 ft ²
Lebanon Merit 0.3% (HOM 10-6-4 base)	23 lb. bag			7,666 ft ²

BIFENTHRIN

ProScape 16-0-8 w/Bifenthrin 0.069%	50 lb. bag	43% MESA	S, Cl	13,000 ft ²
Leb Pro 17-0-5 w/Bifenthrin 0.069%	50 lb. bag	30% SCU	S, Cl	12,000 ft ²
Lebanon Bifenthrin 0.1%G HDG	30 lb. bag			15,000 ft ²

Lawn & Sports Turf Division (973) 252-5455 Golf Division (973) 252-6634

www.GRIturf.com



Contec DG[®]

ContecDG is the premium small particle granular fertilizer, designed for application with conventional rotary spreading equipment, but it is so much more. ContecDG is a combination of premium turf nutrients, patented dispersing granule technology and a special manufacturing process designed specifically to produce Contec DG .

DG[®] PRO

Provide the essential tools turf care professionals need to combat diseases, weeds and insects. This line features dispersible granular technology (as mentioned above). Fast particle breakdown with minimum irrigation and no costly product waste from pooling or run off.

NSN

Reduces nitrification of applied Nitrogen in soil by keeping urea in ammonium form before conversion.

NS- 54

Polymer coated, sulfur coated urea (slow release Nitrogen).

MUtech

Slow release Nitrogen based on Methylene Urea. Blend of molecules designed to provide uniform color, improved density and surge control for 3-4 months. Gradual Nitrogen release unaffected by mower damage.

MUtech-L

A longer-lasting version of Andersons' methylene urea.

MUtech-XL

The longest lasting version of Andersons' methylene urea.

Avail

Increases performance of applied phosphorous by keeping it ready and available for when your turf needs it and enhances root development. Patented technology that surrounds phosphorous in a water soluble "shield" blocking attraction of chemical elements in the soil.

Andersons Contact DG



Service ♦ Technical Support ♦ Quality Products



Fertilizers	Hi-Vis	Pkg Size	Description	Coverage @ 1# N
CONTEC DG FOR GREENS (SGN 75)		50 bags/pallet		
0-0-12	HV	40 lb. bag	24% Mg	4,800 ft ^{2**}
0-0-13 Kal-tec	HV	40 lb. bag	10.5% Ca/ 2% Mg/ 1.5% Mn	5,200 ft ^{2**}
0-0-25	HV	40 lb. bag	Mn/ Mg/ Proactin/ K-Mag	10,000 ft ^{2**}
6-0-12	HV	40 lb. bag	Mn/ Mg/ Proactin/ K-Mag	4,800 ft ^{2**}
7-14-14	HV	40 lb. bag	Mg/ K-Mag	5,600 ft ^{2***}
9-0-18	HV	40 lb. bag	65% MUTEch/ AS/ Mn/ Fe	7,200 ft ^{2**}
10-5-20	HV	40 lb. bag	50% MUTEch/ Micros	8,000 ft ^{2**}
13-3-20	HV	40 lb. bag	Mn/ Mg/ Proactin/ K-Mag	4,800 ft ^{2**}
12-24-08	HV	40 lb. bag	50% MUTEch/ MAP/ Micros	9,600 ft ^{2*}
13-0-26	HV	40 lb. bag	100% Mutech	10,400 ft ^{2**}
14-7-14	HV	40 lb. bag	60% MUTEch/ Fe/ Mn	5,600 ft ²
17-0-17		40 lb. bag	50% MUTEch/ 50% AS/ Fe/ Mn	6,800 ft ²
15-0-15	HV	40 lb. bag	50% Mutech/ 50% AS/ Fe/ Mn	6,000 ft ²
18-3-18	HV	40 lb. bag	93% Mutech	7,200 ft ²
18-9-18	HV	40 lb. bag	60% MUTEch/ Fe/ Mn	7,200 ft ²
19-0-15	HV	40 lb. bag	100% MUTEch/ K-Mag/ Fe	7,600 ft ²
20-0-10		40 lb. bag	75% MUTEch/ Mn	8,000 ft ²
22-0-10	HV	40 lb. bag	90% Mutech-L	8,800 ft ²
CONTEC DG FOR FAIRWAYS (SGN 150)		40 bags/pallet		
18-24-5		50 lb. bag	35% Mutech	9,600 ft ^{2*}
20-0-20		50 lb. bag	100% Mutech	8,000 ft ²
22-0-10	HV	50 lb. bag	90% MUTEch-L	8,800 ft ²
24-0-10		50 lb. bag	90% MUTEch-L	9,600 ft ²
30-0-0	HV	50 lb. bag	92% MUTEch-L	12,000 ft ²
31-0-10		50 lb. bag	45% MUTEch	12,400 ft ²

Fertilizers	Pkg Size	Description	Coverage @ 1# N
CONTEC DG PLUS ACTIVE INGREDIENTS (SGN 75)			
6-0-12	40 lb. bag	0.13% Turf Enhancer (Paclo)	12,000 ft ²
9-0-18	40 lb. bag	0.34% TGR (Paclo)	12,000 ft ²
CONTEC DG PLUS ACTIVE INGREDIENTS (SGN 150)			
24-0-10	50 lb. bag	0.103% Dimension, 90% MUtech-L	9,000 ft ²
DG SOIL AMENDMENTS-WATER DISPERSIBLE (SGN 100)			
DG Gypsum	50 lb. bag	Water-dispersible gypsum granules	2,500 ft ²
DG Lime	50 lb. bag	Water-dispersible lime granules	4,100 ft ²

Product	Pkg Size	SGN	Detail	Coverage @ 1# N
BLENDED FERT FEATURING NUTRISPHERE-N				
21-14-7	50 lb. bag	215	Avail/ Seed Starter	10,500 ft ²
21-14-7	50 lb. bag	215	Avail/ 50% NutriSphere-N	10,500 ft ²
22-0-3	50 lb. bag	215	50% NutriSphere/ 2% Fe/ 2% Mg	11,000 ft ²
23-4-10	50 lb. bag	150	80% NSN/ Avail/ 2% Fe	11,500 ft ²
30-0-4	50 lb. bag	215	50% NutriSphere-N	15,000 ft ²
32-0-4	50 lb. bag	215	50% NutriSphere- N/ 2% Fe	16,000 ft ²
BLENDED FERT FEATURING NS-54				
25-5-12	50 lb. bag	215	50% NS-54/ 2%Fe/ micros	12,500 ft ²

Pre-Emergent Combinations

Product	Pkg Size	SGN	Detail	Coverage @ 1# N
BARRICADE PRODUCTS				
18-0-4 w/ 0.38% Barricade	50 lb. bag	215	25% NS-54	10,000 ft ²
PROPENDI PENDIMETHALIN PRODUCTS				
20-0-4 w/ 0.86% ProPendi	50 lb. bag	215	30% NSN	10,700 ft ²
TUPERSAN PRODUCTS				
12-24-12 w/ 3.5% Siduron	50 lb. bag	215		7,500 ft ²

Fertilizer & Insecticides



Service ♦ Technical Support ♦ Quality Products

Product	Pkg Size	SGN	Detail	Coverage @ 1# N
SUBSURFACE INSECT CONTROL		45 bags/pallet		
15-0-4 w/ 0.2% Merit	50 lb. bag	215	25% NSN	11,100 ft ²
17-0-3 w/.225% Allectus	50 lb. bag	215	40% NSN + 2% Fe	10,080 ft ²
21-0-4 w/ 0.2% Merit	50 lb. bag	215	50% NSN	11,100 ft ²
21-0-7 w/ 0.225% Allectus	50 lb. bag	215	40% NS-54	17,000 ft ²
SURFACE INSECT CONTROL				
16-0-5 w/0.15% ProSect	50 lb. bag	150	On DG Pro	16,600 ft ²
22-0-6 w/0.058 Prosect	50 lb. bag	215	30% NS-54	12,500 ft ²

Lawn & Sports Turf Division (973) 252-5455 Golf Division (973) 252-6634

www.GRIturf.com



Service ♦ Technical Support ♦ Quality Products

O'Natural from Nutrite	Pkg Size	Detail	Coverage @ 1# N
5-4-3	45 lb. bag	W/Iron SGN 220, 100% Organic	2,500 ft ²
14-2-6	50 lb. bag	50% Organic Base/50% XCU + 2% Fe	7,000 ft ²
21-0-9	40 lb. bag	50% Organic Base/50% UFLEXX	10,050 ft ²
0-0-50 mini (SGN 140)	40 lb. bag	Fertilizer to build up soil potassium levels.	25,000 ft ²
0-0-50 micro (SGN 100)	40 lb. bag	Fertilizer to build up soil potassium levels.	25,000 ft ²

Key

- * coverage based on Phosphorous (P)
- ** coverage based on Potassium (K)
- *** coverage based on Phosphorous/Potassium (P/K)

Lawn & Sports Turf Division (973) 252-5455 Golf Division (973) 252-6634

www.GRIturf.com



5-7-5

GUARANTEED ANALYSIS

Total Nitrogen (N) 5.00%
 1.0% Ammoniacal Nitrogen
 4.0% Water Insoluble Nitrogen*
Available Phosphate (P₂O₅) 7.0%
Soluble Potash (K₂O) 5.0%
Calcium (Ca) 1.6%
Magnesium (Mg) 1.0%
Manganese (Mn) 0.2%
 0.20% Water Soluble Manganese (Mn)

Derived from: Alfalfa Meal, Poultry Meal, Fish Meal, Kelp Meal, Composted Poultry Manure, Monoammonium Phosphate, Phosphoric Acid, Manganese Sulfate, Blood Meal, Potassium Sulfate, and Kelp Extract.

*4% Slowly Available Nitrogen from organic meals F1762



12-0-12

GUARANTEED ANALYSIS

Total Nitrogen (N) 12.00%
 8.00% Water Soluble Nitrogen
 4.00% Water Insoluble Nitrogen*
Soluble Potash (K₂O) 12.00%
Calcium (Ca) 2.6%
Magnesium (Mg) 0.6%
 0.6% Water Soluble Magnesium
Iron (Fe) 0.6%
 0.6% Water Soluble Iron
Manganese (Mn) 0.05%
 0.05% Water Soluble Manganese
Zinc (Zn) 0.05%
 0.05% Water Soluble Zinc

Derived from: Kelp Meal, Fish Meal, Crab Meal, Blood Meal, Feather and Alfalfa Meal, Potassium Sulfate, Magnesium Sulfate, Manganese Sulfate, Ferrous Sulfate, Zinc Sulfate, Urea, and Methylene Urea, and Kelp Extract.

*4% Slowly Available Nitrogen F1762



12-4-5

GUARANTEED ANALYSIS

Total Nitrogen (N) 12.00%
 5.25% Urea Nitrogen
 0.65% Ammoniacal Nitrogen
 6.10% Water Insoluble Nitrogen*
Available Phosphate (P₂O₅) 4.0%
Soluble Potash (K₂O) 5.0%
Calcium (Ca) 4.5%
Magnesium (Mg) 0.5%
 0.5% Water Soluble Magnesium
Iron (Fe) 0.5%
 0.5% Water Soluble Iron

Derived from: Kelp Meal, Fish Meal, Crab Meal, Poultry Meal, Blood Meal, Alfalfa meal, Potassium Sulfate, Rock Phosphate, Magnesium Sulfate, Ferrous Sulfate, Urea, Methylene Urea, Monoammonium Phosphate, and Kelp Extract.

*6.10% Slowly Available Nitrogen from Organic Meals



3-0-1

GUARANTEED ANALYSIS

Total Nitrogen (N) 3.00%
 3.0% Water Insoluble Nitrogen*
Soluble Potash (K₂O) 1.00%
Derived from: Oil Seed meal, Kelp Extract and Composted Poultry Litter.

*3.0% Slowly Available Nitrogen

F1762

**Naturally deters worms
and their castings!**

Lawn & Sports Turf Division (973) 252-5455

Golf Division (973) 252-6634

www.GRIturf.com

Ornamental Fertilizer



Service ♦ Technical Support ♦ Quality Products



Product	Pkg. Size	Description
Holly-Tone (4-6-4)	40 lb. bag	Hollies, azaleas, camellias, evergreens, rhodos, & dogwoods
Plant-Tone (5-3-3)	50 lb. bag	Flowers, vegetables, trees, shrubs, & lawn
Bulb-Tone (4-10-6)	25 lb. bag	Tulips, daffodils, gladioli, crocus, hyacinths, & iris
Tree-Tone (9-5-4)	50 lb. bag	Shade, Fruit & Ornamental Trees
Bio-Tone Starter Plus (4-3-3)	25 lb. bag	Helps prevent transplant loss
Organic Weed Preventer Plus (9-0-0)	25 lb. bag	Made from corn gluten
Organic Traditions- Rock Phosphate (0-3-0)	25 lb. bag	Promotes root growth



Product	Pkg. Size	Description
Myke Pro Landscape	1.4/10.9 qt. bag	Granular application for all plant installations
Myke Pro Arbor- WP	3.8 lb. bag	Liquid application for established plants
Myke Pro Turf- WP	1.3 lb. bag	For seed coating, lawn care, hydroseeding and golf courses
Myke Pro Turf- G	44.1 lb. bag	Granular application for laying sod, seeding, lawn care, golf courses

Lawn & Sports Turf Division (973) 252-5455 Golf Division (973) 252-6634

www.GRIturf.com

Soil Amendments



Service ♦ Technical Support ♦ Quality Products



Pure, ultra-fine ground palletized calcium carbonate (38%) is impregnated with PHCA, Solu-cal's proprietary organic Acid. When applied, PHCA reacts with the insoluble calcium both in the soil and on the particle and converts it into **SOLU-CAL**, making the calcium immediately available for plant uptake and pH adjustment.

- University tests show that 500 lbs of **SOLU-CAL** gives equal or better results than 2,000 lbs. of traditional palletized limestone.
- **SOLU-CAL** is 4 times more effective than lime in adjusting soil pH.
- Adjusts pH faster than typical lime products.
- The PHCA in **SOLU-CAL** will solubilize unavailable calcium in the soil from previous lime applications.
- Costs the same and often times less than the equivalent amount of lime.
- Saves time, labor and space.
- 75 % fewer bags to handle and spread.

Product	Pkg. Size	SGN	Description
COARSE GRADE		40 bags/pallet	
Solu-Cal	50 lb. bag	210	
Solu-Cal S	50 lb. bag	210	
Solu-Cal Peak Iron (4-0-6)	50 lb. bag	220	6% Fe
Solu-Cal MAG	50 lb. bag	210	
6-12-6 + Solu-Cal	50 lb. bag	210	17% Ca + Solu-Cal
12-0-4 + Solu-Cal	50 lb. bag	210	30% SCU
18-0-5 + Solu-Cal	50 lb. bag	210	
K-Cal Plus 0-0-16	50 lb. bag		Contains Solu-Cal S
Sulfur MAXX	50 lb. bag		
MICRO GREENS GRADE		40 bags/pallet	
Solu-Cal Micro Prill	50 lb. bag	100	
Solu-Cal S Micro Prill	50 lb. bag	100	
Micro-Cal Extra Micro Nutrient Pak	50 lb. bag	125	
K-Cal 0-0-22	50 lb. bag	100	SOP, 6% Mg Micro
K-Cal Plus 0-0-24	50 lb. bag	100	SOP, 6% Mg Micro

Lawn & Sports Turf Division (973) 252-5455 Golf Division (973) 252-6634

www.GRIturf.com

Soil Amendments



Service ♦ Technical Support ♦ Quality Products

Product	Pkg. Size
COARSE GRADE PRODUCTS	56 bags/pallet
ProSelect Pelletized Calcitic Limestone	50 lb. bag
ProSelect Pelletized Gypsum	50 lb. bag
ProSelect Pelletized Dolomitic Limestone	50 lb. bag
MICRO GREENS GRADE PRODUCTS	56 bags/pallet
ProSelect MICRO Pelletized Calcitic Limestone	50 lb. bag
ProSelect MICRO Pelletized Gypsum	50 lb. bag
ProSelect MICRO Pelletized Dolomitic Limestone	50 lb. bag
PULVERIZED PRODUCTS	64 bags/pallet
Hydrated Lime-Double Strength	50 lb. bag
Pulverized Calcitic Lime	50 lb. bag
ATHLETIC FIELD PRODUCTS	56 bags/pallet
Guide Line White Athletic Field Marker	50 lb. bag
MULCH PRODUCTS	
Bella Vista Velvet Black	60x2 cf bags/pallet
Bella Vista Sahara Red	60x2 cf bags/pallet
Bella Vista Timber Brown	60x2 cf bags/pallet
Bella Vista Black w/Weed Block	60x2 cf bags/pallet
Bella Vista Brown w/Weed Block	60x2 cf bags/pallet
Soft Landing Playground Mulch	60x2 cf bags/pallet
OTHER PRODUCTS	
Jolly Gardener Premium Topsoil	40 lb. bag
Jolly Gardener Garden Soil	60x1 cf bags/pallet
Peat Moss	30x3.8 cf bales/pallet

Lawn & Sports Turf Division (973) 252-5455 Golf Division (973) 252-6634

www.GRIturf.com

Liquid Fertilizers



Service ♦ Technical Support ♦ Quality Products



All of Lebanon's Emerald Isle True Foliar products are designed to produce excellent surface conditions - color, consistency, controlled growth and turf quality. They also provide sea plant extract and other beneficial supplements for root growth, stress tolerance and disease resistance.

Product	Package Size	Analysis	Micronutrients	Rates	Detail
CPR	2x2.5 gal/cs, 15 gal	4-0-1	Mg, S, Fe, Mn, Zn	6-9 oz/1000	Contains Seaplant Extract, Micronutrients and a Surfactant
PanaSea Plus	2x2.5 gal/cs, 15 gal, 55 gal	0-2-2	n/a	2-3 oz/1000	Blend of natural seaplant extracts
True Foliar N	2x2.5 gal/cs, 15 gal	19-1-6	Cu, Fe, Mn, Zn	3-4 oz/1000	Provides several types of N, as well as seaplant extract
True Foliar P	2x2.5 gal/cs, 15 gal	6-12-6	B, Cu, Fe, Mn, Zn	3-4 oz/1000	Features true foliar-available P, as well as seaplant extract
True Foliar NPK	2x2.5 gal/cs, 15 gal	10-3-16	n/a	3-4 oz/1000	Unique benefits of Phosphite, as well as seaplant extract
True Foliar K	2x2.5 gal/cs, 15 gal	2-0-16	Mg, Fe, Mn	3-4 oz/1000	Provides two types of K, as well as seaplant extract
True Foliar Si	2x2.5 gal/cs, 15 gal	3-0-10	n/a	3-4 oz/1000	Unique benefits of Si, as well as seaplant extract
True Foliar Ca	2x2.5 gal/cs, 15 gal	8-0-4	Ca, B, Si	3-4 oz/1000	Provides 8% Ca, as well as seaplant extract
True Foliar NK Balance	2x2.5 gal/cs, 15 gal	10-0-10	Mg, Cu, Fe, Mn, Zn	6-12 oz/1000	Provides several types of N and K, as well as seaplant extract
True Foliar Mg Mn	2x2.5 gal/cs, 15 gal	6-0-0	Mg, Mn	3-4 oz/1000	Provides Mg and Mn, as well as seaplant extract
Fairway 30-0- 0	15 gal, 55 gal, 275 gal tote	30-0-0	n/a	4-6 oz/1000	Contains N and seaplant extract for advanced foliar nutrition
SeaSequential Micros	2x2.5 gal/cs, 15 gal	7-0-1	Mg, S, B, Fe, Mn, Zn	2-3 oz/1000	Chelated Fe packed with micronutrients and seaplant extract
Fairway SeaSequential	2x2.5 gal/cs, 15 gal	6-0-2	S, Fe	2-3 oz/1000	Chelated Fe with seaplant extract

Lawn & Sports Turf Division (973) 252-5455 Golf Division (973) 252-6634

www.GRIturf.com



Service ♦ Technical Support ♦ Quality Products



- Environmentally friendly
- No Streaking
- Total compatibility w/other applied chemicals
- Ease of application
- Adaptable to foliar feeding
- Low salt index
- Improved resistance to disease

Full Line Available

Bent Special Plus 28-8-18 Ideal for use on greens, tees, and fairways. Helps turf stand up to heavy traffic and close-mowing, allows rapid thatch decomposition and promotes deep-penetrating root development. Comes in 25 lb. bags.

Lawn & Sports Turf Division (973) 252-5455 Golf Division (973) 252-6634

www.GRIturf.com

Liquid Fertilizers, Organics and Micronutrients



Service ♦ Technical Support ♦ Quality Products



Available Sizes

- 2x2.5 gal/cs
- 30 gal drum
- 55 gal drum
- 275 mini bulk



The Classic 18-3-6

- Provides dual efficiency-foliar/root
- Low salt Index
- No nitrates/ no chlorides
- 50% slow release nitrogen plus micronutrients
- Made from the highest quality NPK raw materials
- Compatible with fungicides, herbicides and insecticides



X-Xtra Iron 9% (6-0-0)

- Fast green-up, no surge growth
- Compatible with PGR's
- Corrects iron chlorosis overnight
- Higher iron source chelate
- Used for regular turf maintenance to enhance rich, green color and promote strong root growth
- Can also be used on tree, turf and ornamentals for correction of iron deficiencies and chlorosis



Essential Plus 1-0-1

- Rejuvenates soil structure
- Food source for microbial activity
- Stimulates root and plant growth
- Contains 21 Natural L-Amino Acids
- 100% organic from plant and vegetable products
- Provides a rich carbon source of organic matter
- Helps replenish soils that have been depleted of organic matter and improve poor or subsoil conditions



Nitro + K 22-0-16

- 82% slow release methylene nitrogen with potassium carbonate
- Provides a food source for soil microbes
- Cost-effective for tees, fairways and greens
- Provides consistent nitrogen release without producing flush growth
- Reduces unwanted thatch and possible disease problems

Liquid Fertilizers, Organics and Micronutrients



Service ♦ Technical Support ♦ Quality Products

Companion Liquid Microbial Inoculant/Soil Amendment (1/2/5 gal box, 30 gal drum)



- Quickly colonizes soil with microbes
- Improves nutrient uptake
- Provides proper ecological balance
- Stimulates healthier roots
- Use for new seeding, transplants, sod, general maintenance and remedial soil applications
- Neutralizes chemical salts



Arbor Care 15-8-4

- Complete micronutrient package
- Extremely low salt index
- Perfect for root injection
- Compatible with herbicides, fungicides and pesticides



Starter Plus 8- 32-5

- 50% Slow release Nitrogen
- Newly seeded areas
- No agitation needed
- Promotes rooting
- Compatible w/ tech. materials

Magnesium Chelate 3%

- Assists in Chlorophyll production
- For foliar and root application
- For turf and ornamentals
- Natural organic chelating agent

Manganese Chelate 5 %

- 2% Sulfur, assists in enzyme formulation for turf and ornamentals, foliar and root applications, corrects deficiencies

Calcium Chelate 8% 6-0-0

- Turf, nursery, and green house
- Corrects calcium deficiency
- Reduces soil compaction
- Stress tolerance & turgidity

See Appendix II for programs featuring Growth Products

20-3-3 Quick Response

- Slow release nitrogen
- Economical for lawn care
- Compatible w/tech. materials
- Fast green up

Iron Max AC 6% 15-0-0

- 2% chelated Manganese
- Promotes rapid green up
- 100% chelated Iron and Manganese
- Compatible w/tech. materials

10-10-10

- 40% Slow-release Nitrogen
- Provides continuous, steady feeding
- Low salt index, ideal for annuals and perennials

Autumn Care 6-12-12

- 40 % Slow release Nitrogen
- SAFE - does not burn!
- Provides a continuous, steady feed

Micrel Total 5-0-0

- Turf, tree care & nursery greenhouse
- Foliar spray to correct chlorosis

Specialty Products



Service ♦ Technical Support ♦ Quality Products

NUTRI-GROW[®] MAGNUM



- NutriGrow[®] MAGNUM is a concentrated foliar nutrient solution.
- Contains, in highly soluble form, certain elements, including Potassium and Nitrogen.
- Beneficial to plant growth, rooting, root development, flowering, and transplant establishment and with sufficient nitrogen.
- It may improve color development when applied as a properly timed foliar or soil spray.
- Highly Stable low rate phosphite (2oz/1000)



NuRelease

NuRelease[™] is an innovative nutrient release soil treatment and tank mix additive. NuRelease is formulated to maximize nutrient release, bioavailability and uptake efficiency in the rootzone. When added to fertilizers, it maintains nutrient solubility and facilitates plant nutrient uptake and foliar absorption.

Proactin^{EX} Express Technology



Benefits of ProactinEX

- Strengthens plants to withstand adverse soil and environmental conditions.
- Improves chelation, translocation and use of plant nutrients to increase fertilizer efficacy and improve plant vigor.
- Extends the even growth and color of turf throughout the season (without urea or iron)
- Increases efficiency of post-emergent herbicides

Product Features

- Fully concentrated — cost effective
- Contains a pre-selected panel of vegetable-based, L-form amino acids
- Features a vitamin premix, profiled to strengthen plant development
- Enhanced with Express Technology, a patented formulation using SAR compounds and a transcuticular nutrient delivery system to improve uptake and nutrient mobility.
- Stand-alone product, easily added to turf nutritional programs.

Lawn & Sports Turf Division (973) 252-5455 Golf Division (973) 252-6634

www.GRIturf.com

Grass Seed/ Grass Seed Mixes



Service ♦ Technical Support ♦ Quality Products

LebanonTurf

TRIFECTA II GLSR PERENNIAL RYEGRASS BLEND

- 40% Exacta II Perennial Ryegrass
- 30% Secretariat II Perennial Ryegrass
- 30% Charismatic II Perennial Ryegrass

Ultimate Gray Leaf Spot Resistance Ryegrass blend

New seeding = 6-8 lbs. per 1,000 sq ft
Overseeding = 3-4 lbs. per 1,000 sq ft
Approx. Germination: 7-12 days

PROSCAPE VINTAGE LOW-CUT BLUEGRASS BLEND

- 30% Bordeaux Kentucky Bluegrass
- 30% Champagne Kentucky Bluegrass
- 25% Sonoma Kentucky Bluegrass
- 15% Cabernet Kentucky Bluegrass

Elite Bluegrass blend for new and established golf fairways, roughs and athletic fields

New seeding = 3-4 lbs. per 1,000 sq ft
Overseeding = 1-2 lbs. per 1,000 sq ft
Approx. Germination 14-28 days

WINNING COLORS TALL FESCUE BLEND

- 25% Rembrandt Tall Fescue
- 25% Masterpiece Tall Fescue
- 25% Picasso Tall Fescue
- 25% DaVinci Tall Fescue

Top rated for overall turf quality, Brown Patch resistance and color

New seeding = 8 lbs. per 1,000 sq ft
Overseeding = 4 lbs. per 1,000 sq ft
Approx. Germination 10-14 days

PROSCAPE 80/20 BLUE/RYE MIX

- 30% Sonoma Kentucky Bluegrass
- 30% Bordeaux Kentucky Bluegrass
- 20% Champagne Ryegrass
- 20% Exacta II Perennial Ryegrass

Top rated 80/20 blue rye mix for new and established golf fairways, roughs, athletic fields and home lawns

New seeding = 4-5 lbs. per 1,000 sq ft
Overseeding = 2-4 lbs. per 1,000 sq ft
Approx. Germination 7-21 days

PROSCAPE PREMIUM BLUE MIX

- 30% Bordeaux Kentucky Bluegrass
- 30% Charismatic Perennial Ryegrass
- 20% Sonoma Kentucky Bluegrass
- 20% Champagne Kentucky Bluegrass

Quick establishing quality 70/30 Blue/Rye mix

New seeding = 4-5 lbs. per 1,000 sq ft
Overseeding = 3-4 lbs. per 1,000 sq ft
Approx. Germination 10-21 days

CEZANNE RZ TALL FESCUE

- Exhibits Rhizomatous traits
- #1 overall of 113 for sod strength in 2007 and 2008 NTEP trials
- Very good for drought tolerance
- Medium fine leaf texture
- Ranked tied for #3 of 113 in Southeast region
- Excellent for Brown patch resistance
- Very good traffic tolerance
- Excellent turf density and mowing qualities

Lawn & Sports Turf Division (973) 252-5455 Golf Division (973) 252-6634

www.GRIturf.com

Grass Seed/ Grass Seed Mixes



Service ♦ Technical Support ♦ Quality Products

AMBASSADOR CHEWINGS FESCUE

- Dark green genetic color
- Very fine leaf texture
- Very good mowing qualities
- Excellent disease resistance
- Ranked #1 for dollar spot in 2004-2007 NTEP
- Ranked #1 for traffic stress in Madison, WI in 2005 NTEP
- Excellent summer density ratings
- Good cold tolerance
- Drought and heat tolerant

PROSCAPE CONTRACTORS MIX

- 40% Annual Ryegrass
- 25% Perennial Ryegrass
- 25% Creeping Red Fescue
- 10% Kentucky Bluegrass

GRI SHADE MIX

- 44% Creeping Fescue
- 34% Creeping Red Fescue
- 10% Hard Fescue
- 10% Kentucky Bluegrass

PennMulch[®]

Seed Accelerator

0.7-1-0.4

Guaranteed Analysis

Total Nitrogen (N).....	0.7%
Available Phosphate (P ₂ O ₅).....	1.0%
Soluble Potash (K ₂ O).....	0.4%

Derived from Ammonium Nitrate-Urea Solution, Ammonium Polyphosphate, and Muriate of Potash. F699

*ALSO CONTAINS NON-PLANT FOOD INGREDIENT
1.5% Sodium polyacralite
92.0% Paper Mulch
6.5% Fertilizer



Package Size: 50 lbs

Rates vary from .55 lb/1,000ft² to 2.55lb/1,000ft²

See label for specific application rates.

Lawn & Sports Turf Division (973) 252-5455 Golf Division (973) 252-6634

www.GRIturf.com

Grass Seed/ Grass Seed Mixes



Service ♦ Technical Support ♦ Quality Products

PROSCAPE 50/50 BLUE/RYE MIX

- 30% Sonoma Kentucky Bluegrass
- 20% Bordeaux Kentucky Ryegrass
- 25% Charismatic II Perennial Ryegrass
- 25% Exacta II Perennial Ryegrass

**Top rated 50/50 blue rye mix
for athletic turf and home lawns**

New seeding = 4-5 lbs per 1,000 sq ft

Overseeding = 2-4 lbs per 1,000 sq ft

Approx. Germination 7-21 days

PROSCAPE SUPERIOR SUN & SHADE MIX

- 30% Charismatic Perennial Ryegrass
- 25% Exacta Perennial Ryegrass
- 20% Pathfinder Creeping Red Fescue
- 15% Sonoma Kentucky Bluegrass
- 10% Ambassador Chewings Fescue

Mix of top varieties that excel on any site

New seeding = 6-8 lbs per 1,000 sq ft

Overseeding = 3-4 lbs per 1,000 sq ft

Approx. Germination 7-15 days

PROSCAPE UNIVERSITY SELECT MIX

- 35% Charismatic II Perennial Ryegrass
- 35% Sonoma Kentucky Bluegrass
- 30% Pathfinder Creeping Red Fescue

**The ultimate 1/3 each university
recommended mix**

New seeding = 6-8 lbs per 1,000 sq ft

Overseeding = 3-4 lbs per 1,000 sq ft

Approx. Germination 10-21 days

PROSCAPE LANDSCAPE MIX

- 25% Exacta Perennial Ryegrass
- 25% Affirmed Perennial Ryegrass
- 25% Kentucky Bluegrass 98/85
- 25% Pathfinder Creeping Red Fescue

**Quick establishing and economical all
purpose mix**

New seeding = 7-8 lbs per 1,000 sq ft

Approx. Germination 10-21 days

Native Area & Wildflower mixes also available.

PROSCAPE SHADY TURF SUPREME MIX

- 30% Pathfinder Creeping Red Fescue
- 30% Charismatic Perennial Ryegrass
- 30% Ambassador Chewings Fescue
- 10% Oxford Hard Fescue

**Provides dense turf stand on shade or
low-maintenance sites**

New seeding = 8 lbs per 1,000 sq ft

Overseeding = 4 lbs per 1,000 sq ft

Approx. Germination 7-15 days

PROSCAPE SPORTSTURF MIX

- 50% Picasso Tall Fescue
- 20% Rembrandt Tall Fescue
- 20% Affirmed Perennial Ryegrass
- 10% Sonoma Kentucky Bluegrass
- May also contain DaVinci Tall Fescue

**Drought and disease-resistant mix
ideal for heavy-use athletic fields**

New seeding = 8 lbs per 1,000 sq ft

Overseeding = 4 lbs per 1,000 sq ft

Approx. Germination 10-21 days

PROSCAPE WINNING COLORS PLUS

- 25% Rembrandt Tall Fescue
- 25% Picasso Tall Fescue
- 20% Masterpiece Tall Fescue
- 20% DaVinci Tall Fescue
- 10% Champagne Kentucky Bluegrass

**90/10 mix ideal for sod production,
athletic fields and home lawns**

New seeding = 8 lbs per 1,000 sq ft

Overseeding = 4 lbs per 1,000 sq ft

Approx. Germination 7-15 days

PROSCAPE LINKS/ECOLOGY MIX

- 40% Pathfinder Creeping Red Fescue
- 40% Ambassador Chewings Fescue
- 20% Oxford Hard Fescue

**Low maintenance fine fescue for
golf roughs, dense shade and other
naturalized areas**

New seeding = 5-6 lbs per 1,000 sq ft

Overseeding = 3-4 lbs per 1,000 sq ft

Approx. Germination 10-16 days

Lawn & Sports Turf Division (973) 252-5455 Golf Division (973) 252-6634

www.GRIturf.com

Bentgrass Seed



Service ♦ Technical Support ♦ Quality Products

Proclamation Creeping Bentgrass

- Top rated for lack of scalping
- Excellent for fall density on fairways
- Very good spring green up

Establishment

- New Seeding Rate: 1.0 lb /1000sq ft
- Interseed Rate: 0.25-0.5 lb /1000 sq ft

Mowing Heights

- 0.1 to 0.15 in height on greens
- Ideal for fairways/tees at higher levels

Declaration Creeping Bentgrass

- Top ranked for dollar spot resistance
- Excellent resistance to brown patch
- Ideal for fairways, greens, and tees

Establishment

- New Seeding Rate: 1.0 lb /1000sq ft
- Interseed Rate: 0.25-0.5 lb /1000 sq ft

Mowing Heights

- 0.1 to 0.15 in height on greens
- Ideal for fairways/tees at higher levels

Independence Creeping Bentgrass

- Improved overall disease resistance
- Excellent seedling vigor, fast establishment
- Superb resistance to Poa annua
- Improved mowing qualities
- Medium dark green color
- Upright, aggressive growth habit
- Excellent for fairways, greens, and tees

Establishment

- New Seeding rate: 1.0 lb /1000 sq ft
- Interseed rate: 0.25 - 0.5 lb /1000 sq ft

Mowing heights

- 0.1 to 0.15 in heights on greens
- Ideal for fairways/tees at higher levels

Constitution Creeping Bentgrass Blend

- Top ranked for turf quality
- Superior disease resistance
- Broad genetic base
- 50% Declaration/50% Proclamation

Legendary Velvet Bentgrass

- Top ranked for turf quality
- Vibrant, medium green color
- Shade and drought tolerant
- Top ranked under low maintenance
- Top ranked for winter color
- Top ranked for brown patch
- Very smooth putting surface

Patriot Fairway/Tee Creeping Bentgrass Blend

- Blend of 60% Independence creeping bentgrass / 40% Trueline creeping bentgrass
- Ideal for new fairway construction or existing fairway turf interseeding

Other Bentgrass Seeds available upon request include:

- **PennLinks**
- **L93**
- **Penn A-1**
- **Penn A-4**
- **Penncross**
- **Penneagle II**
- **Penn Links II**
- **PennTrio Blend**
- **Pennway Blend (cert. & uncert.)**
- **T-1**
- **Tyee**
- **007**

Lawn & Sports Turf Division (973) 252-5455 Golf Division (973) 252-6634

www.GRIturf.com



Innovative Grass Seed Products



Perennial Ryegrass

- A creeping perennial ryegrass, RPR outperforms traditional perennial ryegrass.
- It's also more resilient and weather tolerant.
- Because RPR is chosen for top professional sports venues, it could be an ideal choice for your sports field, golf course, lawn or landscape.
- Available with or without Yellow Jacket coating.



Service ♦ Technical Support ♦ Quality Products



Overseeding made easy

- Low cut Annual Ryegrass
- Fast germination and establishment
- High wear tolerance
- Excellent germination at lower temps.
- Good disease resistance
- Turf type
- Deep dark green color



- Turf Blue is available in a number of unique blends.
- These blends have been specially formulated to exhibit very specific characteristics.
- Whether you need lighter varieties to conceal Poa in your fairway or faster establishing varieties to repair your high traffic areas, you can count on the Turf Blue family of blends to meet your expectations.

Technology

Yellow Jacket

- Utilizes Zebra superabsorbant technology
- Produces a coating that can hold up to 600 times its own weight in waters
- Simultaneously helps seed thrive while conserving water
- Faster establishment
- Helps conserve water
- Enhances seed performance
- Enhances turf characteristics

Bentgrass with Yellow Jacket

Lineup

- Declaration
- Penn A-4
- PennCross
- PennTrio
- L-93



YELLOW JACKET
ENHANCED SEED COATING

Lawn & Sports Turf Division (973) 252-5455 Golf Division (973) 252-6634

www.GRIturf.com

EROSION CONTROL PRODUCTS



Service ♦ Technical Support ♦ Quality Products

Curlex



Curlex blankets consist of unique softly barbed, interlocking, curled, Aspen excelsior fibers. They are naturally seed free. Curlex blankets are available with a variety of environmentally sensitive and/or stronger netting types to match job site requirements. We offer a green color-coded plastic netting for applications requiring UV resistance, strength, and longevity. Our photo-degradable Quick Mow™ netting is recommended for urban, golf course, and certain roadside projects. It is color-coded (white) to identify it as a rapid breakdown, polypropylene netting designed for use in areas to be mowed. Also available is our FibreNet™ - 100% biodegradable netting - for use in critical environmentally sensitive areas.

Curlex Netfree



A 100% biodegradable erosion blanket manufactured with an engineered cut of Great Lakes Aspen excelsior wood fiber. The wood fiber shall consist of 80% six-inch or greater in length. The blanket shall be of consistent thickness, with fibers evenly distributed throughout the entire area of the blanket creating a mat with no voids in material. The blanket shall be manufactured using a 100% biodegradable stitch material to form the continuous matrix of Curlex fibers.

SEDIMENT LOGS



Energy dissipation and Sediment Control Device for:

- Ditch bottoms, swales and waterways
- Over bare soils and/or temporary & turf reinforcement mats (TRMs)
- 360 degree protection around catch basins & drop inlet structures
- Curb & drainage outlets
- As wattles on steep slopes
- Use in place of bales, silt fence, reinforced silt fence and rock checks
- 12" W x 10' L



Lawn & Sports Turf Division (973) 252-5455 Golf Division (973) 252-6634

www.GRIturf.com

Curlex I



Service ♦ Technical Support ♦ Quality Products

Recommended Use:	Slopes to 2:1; Channels to 7 ft/s, shear stress to 1.75 lb/ft²	
Roll Sizes:	4' x 101.25' (45 yd ²) 8' x 101.25' (90 yd ²)	12' x 101.25' (135 yd ²) 16' x 101.25' (180 yd ²)
Weight:	0.73 lb/yd ²	
Netting Options:	Green, Quick Mow White (90 day), FibreNet	
Color:	Natural Aspen or QuickGRASS (Green)	

Curlex II

Recommended Use:	Slopes to 1.5:1; Channels to 9 ft/s, shear stress to 2.25 lb/ft²	
Roll Sizes:	4' x 101.25' (45 yd ²) 8' x 101.25' (90 yd ²)	12' x 101.25' (135 yd ²) 16' x 101.25' (180 yd ²)
Weight:	0.73 lb/yd ²	
Netting Options:	Green, Quick Mow White (90 day), FibreNet	
Color:	Natural Aspen or QuickGRASS (Green)	

Curlex CL

Product	Slopes	Channels (Shear Stress Rating)
Curlex I CL	2.5H:1V & flatter	77 Pa (1.60 lb/ft ²)
Curlex II CL	1.5H:1V & flatter	86 Pa (1.80 lb/ft ²)

Curlex Net Free

Netting Type	None
Slopes	< 3H:1V
Shear Stress	48 Pa (1.0 lb/ft ²)

AEC Premier Straw

Product	Roll Sizes	Weight
AEC Premier Straw	8.0 ft x 112.5 ft (100 yd ²)	0.50 lb/yd ²

Lawn & Sports Turf Division (973) 252-5455 Golf Division (973) 252-6634

www.GRIturf.com

Divot Repair & Topdressings



Service ♦ Technical Support ♦ Quality Products



Grass Roots Green Divot Repair

FertleSoil's Blend of Sand, Peat & Sterilized Mushroom Soil colored Green & Heat Set to keep color long lasting. Fills & Feeds Divots for quick recovery. Turf will be back before color is gone!

Grass Roots Premium Soil Divot Repair

Superior Blend of Reed Sedge Peat, Sterilized Mushroom Soil & Sand to create a rich natural brown color and rich nutrient filled soil with great water retention for an ideal medium for seed germination & plant growth.

Grass Roots Set Green Topdressing Sand

USGA Topdressing Sand Colored Deep Green & Heat Set to Keep Color Long Lasting. Used for Divot Repair or a Green Colored Topdressing Sand.

Kiln Dried Topdressing Sand

USGA Silica Topdressing Sand Kiln Dried. Used for Topdressing or Drill & Fill Projects.

Grass Roots / Organic Topdressing

Premium Topdressing. FertylSoil's Blend of USGA Topdressing Sand & Mushroom Soil, Kiln Dried & Screened to create a free flowing homogenous blend that can be easily spread. Used as a topdressing in blends ranging from 70/30 to 95/5. Also used in Drill & Fill applications when

PMS

Processed Mushroom Soil is the Aged Mushroom Soil; which at the aged stage it is not mushroom soil, but rather a hummus.

Available in sacks, bags and bulk

Lawn & Sports Turf Division (973) 252-5455 Golf Division (973) 252-6634

www.GRIturf.com

Divot Repair & Topdressings



Service ♦ Technical Support ♦ Quality Products



Product	Description
Partac Green Sand Divot Repair Mix-FINE	Ceramically and permanently colored green - for televised tournaments, the ultimate solution to unsightly divots
Partac Green Sand Divot Repair Mix-COARSE	Ceramically and permanently colored green - for televised tournaments, the ultimate solution to unsightly divots
Partac Premium Divot Repair Mix	For quick germination, just add grass seed
Partac Green Sand-FINE	Blended with Partac Premium Top-Dressing for excellent germination and deep green color
Partac Green Sand-COARSE	Blended with Partac Premium Top-Dressing for excellent germination and deep green color
Partac Golf Sand A (Heat Treated)	Ideal for use in construction of greens and tees, for sand top-dressing, and for Drill 'N Fill
Partac Premium Topdressing	Made to the leading university and USGA recommendations. All ingredients are heat treated together and screened thru 2mm square screens.
Partac Premium High Sand Topdressing	Made to the leading university and USGA recommendations. All ingredients are heat treated together and screened thru 2mm square screens. Available in 50 lb. bags or bulk

Crumb Rubber



Product	Color	Pkg. Size
Crumb Rubber Infill 10:20 Mesh	Black	2,000 lb. sack
Crumb Rubber Infill 10:20 Mesh	Black	50 lb. bag

Lawn & Sports Turf Division (973) 252-5455 Golf Division (973) 252-6634

www.GRIturf.com



TURFACE ATHLETICS™



Service ♦ Technical Support ♦ Quality Products



Field and Fairway is available in two distinct colors: Natural and Emerald. Incorporate Natural into your root zone to prevent compaction and amend poor soils during renovation and construction. Emerald uses include covering up rough spots on your field, masking worn or high-traffic areas and adding color and strength to turf.



Turface MVP: no better way to improve drainage and reduce compaction on your field.

For more than 40 years, no other in-field conditioner has been used on more diamonds than Turface MVP.



Turface Pro League: the new standard for creating the ultimate sliding surface. Used as a topdressing, Pro League saves games and turf by preventing slick and muddy conditions that destroy turf and make fields unsafe and unplayable. It provides superior drainage and absorption and delivers the color, safety and performance of a Major League infield.



Greens Grade™ is the perfect choice for conditioning sand-based sports turf. Its uniform particle size makes it ideal for new field construction, topdressing and infilling aerated fields. It is available in natural and emerald green to blend in with color of sports turf.

Turface Pro League Red



Turface Pro League is a patented soil conditioner manufactured with smaller, more consistent particles that flow easily into aerification holes. Pro League's smaller uniform particle size is tested and approved by Major League groundskeepers.

Turface Pro League Heritage Red



The rich "cherrywood" color of this infield conditioner provides excellent ball visibility. Offers appealing dark red color whether the infield is wet or dry.



Turface Quick Dry.

Eliminate puddles and standing water. After a rain, Turface Quick Dry makes muddy, slippery conditions a thing of the past. Quick Dry will not cake, become slippery or turn your field rock-hard, and works over and over again.

Turface Mound Clay and MoundMaster Blocks are virgin packing clay without any additives that diminish a clay's quality. Their high degree of plasticity provides the best footing and wear resistance, allowing them to stand up to the intense activity received by pitching mounds and batter's and catcher's boxes.

Mulch



Service ♦ Technical Support ♦ Quality Products

Product	Pkg. Size
MULCH PRODUCTS	
Bella Vista Velvet Black	60x2 cf bags/pallet
Bella Vista Sahara Red	60x2 cf bags/pallet
Bella Vista Timber Brown	60x2 cf bags/pallet
Bella Vista Black w/Weed Block	60x2 cf bags/pallet
Bella Vista Brown w/Weed Block	60x2 cf bags/pallet
Soft Landing Playground Mulch	60x2 cf bags/pallet
OTHER PRODUCTS	
Jolly Gardener Premium Topsoil	40 lb. bag
Jolly Gardener Garden Soil	60x1 cf bags/pallet
Peat Moss	30x3.8 cf bales/pallet

Rubber Mulch



Product	Color	Pkg. Size
Pinnacle Rubber Mulch-Red, Brown or Brown	Red or Brown	26 lb. bag
Pinnacle Rubber Mulch-Red, Brown or Brown	Red or Brown	50 lb. bag
Pinnacle Rubber Mulch-Red, Brown or Brown	Red or Brown	2,000 lb. sack
Pinnacle Rubber Mulch-Blue or Green	Blue or Green	26 lb. bag
Pinnacle Rubber Mulch-Blue or Green	Blue or Green	50 lb. bag
Pinnacle Rubber Mulch-Blue or Green	Blue or Green	2,000 lb. sack
Pinnacle Rubber Mulch-Tan	Tan	26 lb. bag
Pinnacle Rubber Mulch-Tan	Tan	50 lb. bag
Pinnacle Rubber Mulch-Tan	Tan	2,000 lb. sack

Lawn & Sports Turf Division (973) 252-5455 Golf Division (973) 252-6634

www.GRIturf.com

Animal Repellents



Service ♦ Technical Support ♦ Quality Products



Product	Pkg. Size	Description
Animal Stopper- Liquid	1 quart, 1 gal jug, 2.5 gal jug	Repellent for use in beds or as a perimeter deterrent for low level animal damage.
Animal Stopper- Granular	2.5 or 12 lb. container	Repellent for use in beds or as a perimeter deterrent for low level animal damage.
Deer Stopper	1 quart, 1 gal jug, 2.5 gal jug	Prevent deer, elk and moose.
Goose Stopper	1 quart, 1 gal jug, 2.5 gal jug	Prevents goose foraging, nesting and damage.
Groundhog Stopper	1 quart, 1 gal jug, 2.5 gal jug	Repellent to keep most small herbivores and scavenger animals away.
Mole and Vole Stopper	1 quart, 1 gal jug, 2.5 gal jug	Prevents chewing, digging, foraging and tunneling damage to turf and garden.
Rabbit Stopper	1 quart, 1 gal jug, 2.5 gal jug	Keep most small herbivores and scavenger animals away.



Product	Pkg. Size	Description
Talpirid Mole Bait	20 worm bait	Proved to be the most preferred food source for moles after earthworms.
Sprayon Wast and Hornet Killer	14 oz bottle	Kills wasps, hornets, yellow jackets, flies, mosquitoes and flying moths.
Sprayon Insect Repellent II	6 oz bottle	Protect against insect bites up to four hours under normal use.
PHC Mosquito Dunks	20 dunks per card 5 cards/cs.	Control mosquito larvae for 30 days or more under typical conditions.



Product	Pkg. Size	Description
Deer Scram Pro	25 lb. container	Scares deer away by emitting an odor they associate with death.

www.GRIturf.com

Spreader



Service ♦ Technical Support ♦ Quality Products



SR 2000

- New and improved thicker-walled, stainless steel frame is more durable.
- Positive on-off side deflector provides product delivery control.
- Larger 13" Turf Saver 2 pneumatic wheels for an easier push.



Spyker 05-288-2200

- Poly hopper with 120 lb / 2.03 cu ft capacity, patented split-shaft design for easy calibration.



Accu PRO 2000

- Patented Helical Cone for a uniform, consistent spread pattern.
- Lift handles in the front and back for easier loading and unloading.
- Standard port shut-off control for great application efficiency.



Spyker P20-5010

- Poly hopper with 50 lb / 1.11 cu ft capacity.



Spyker S60-9020

- Stainless steel frame, Stainless steel hopper with 110 lb / 2.3 cu/ft.



SS2 Drop Spreader

- Stainless steel frame, hopper and fasteners provide outstanding durability and corrosion resistance.
- Larger 13" Turf Saver 2 pneumatic wheels for an easier push.



PennMulch[®]
Seed Accelerator



ProScape PennMulch[®] spreader - Stainless steel components, serves all your spreading needs from seed, salt & lime to PennMulch[®].

Lawn & Sports Turf Division (973) 252-5455 Golf Division (973) 252-6634

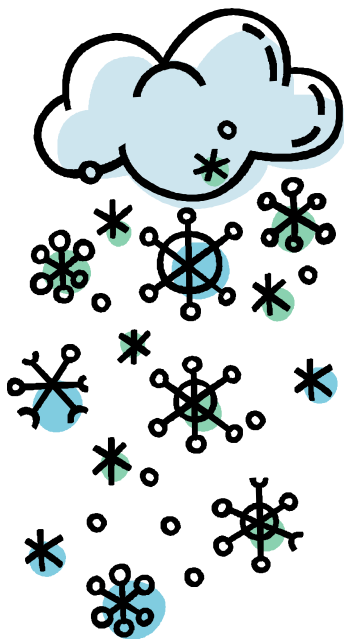
www.GRIturf.com

Rock Salt & Ice Melt Products



Service ♦ Technical Support ♦ Quality Products

Product	Pkg. Size	Description
Peladow Calcium Chloride	50 lb. bag	Melts ice 2 to 5 times faster than competing ice-melt materials.
Halite rock salt	50 lb. bag	Works best at temperatures as low as 5°F.
Calcium Chloride (flakes)	50 lb. bag	Flakes provide a big flat, smooth and even surface area.
Magnesium Chloride (pellets/flakes)	50 lb. bag	It melts ice effectively at temperatures as low as -13°F, which is considerably below most other products. And it works fast.



Lawn & Sports Turf Division (973) 252-5455 Golf Division (973) 252-6634

www.GRIturf.com



	Ultimate 350	SandMat 400	SandMat 300	SandMat 200	SandMat 100
Application	Demanding	Demanding	Intermediate	Economical	Interface
Profile	Critical, Complex	Extreme, Complex	Moderate	Gentle, Less Severe	Flat
Subgrade	Rocky, Clay, Peat Silt	Clay, Silt, Sand	Clay, Silt, Sand	Clay, Silt, Sand	Rocky, Silt, Peat
Contamination	Excellent	Very good	Good	Good	Very Good
Triple Bonded	Yes	Yes	Yes	Yes	No
Width	116",58",36"	116",58",36"	116",58"	116"	58"
Length	75'	75'	100'	125'	250'

Estimate Number of Staples Required

Mostly Floor with Little Sloop	Budget 1.10 staples per sq ft/10.8 staples per sq M
Typical bunker e.g. 1/3 slope	Budget 1.17 staples per sq ft/12.6 staples per sq M
High Proportion of slope	Budget 1.33 staples per sq ft/14.3 staples per sq M

* SandMat recommends 8" galvanized staples

Determining Coverage Requirements

Simple Shape & Edge Detail	Add 10% to base quantity
Moderate Shape & Detail	Add 15% to base quantity
Complex Shapes	Add 17 to base quantity

Lawn & Sports Turf Division (973) 252-5455 Golf Division (973) 252-6634

www.GRIturf.com

Turf Covers



Service ♦ Technical Support ♦ Quality Products



HPI Evergreen Turf Covers

- One piece construction.
- Custom sizes available (must have one side divisible by 5' or 10').
- Complete with storage bag.
- Complete with anchoring pegs.
- Available in **three** strengths.

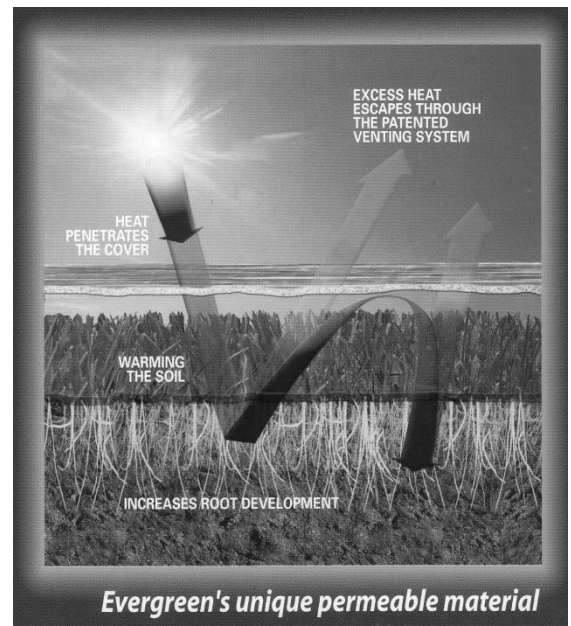
Evergreen EVS Turf Cover (3 year warranty)

Evergreen "Original" Turf Cover (7 year warranty)

Evergreen Radiant Turf Cover (10 year warranty)

Sizes

- 10'x50'
- 20'x50'
- 50'x60'
- 60'x90'
- 70'x90'
- 80'x110'



Lawn & Sports Turf Division (973) 252-5455 Golf Division (973) 252-6634

www.GRIturf.com

Marking Supplies



Service ♦ Technical Support ♦ Quality Products



Marking Paints

Color	Pkg. Size
White	12 cans/case
High Visibility Yellow	12 cans/case
Safety Red	12 cans/case
Alert Orange	12 cans/case
Safety Green	12 cans/case
Caution Blue	12 cans/case
Fluorescent Pink	12 cans/case
Fluorescent Orange	12 cans/case
Fluorescent Green	12 cans/case
Fluorescent Red/Orange	12 cans/case
Black	12 cans/case
Caution Yellow	12 cans/case
Safety Purple	12 cans/case



Athletic Marking Paints

Color	Pkg. Size
Athletic Yellow	12 cans/case
Athletic Orange	12 cans/case
Athletic Scarlet	12 cans/case
Athletic Royal	12 cans/case
Athletic Black	12 cans/case
Athletic Maroon	12 cans/case
Athletic Purple	12 cans/case
Athletic Navy	12 cans/case
Athletic Fluorescent Orange	12 cans/case
Athletic Fluorescent Green	12 cans/case
Old Gold	12 cans/case
Turf Green	12 cans/case
Athletic White	12 cans/case or 5 gallon pail



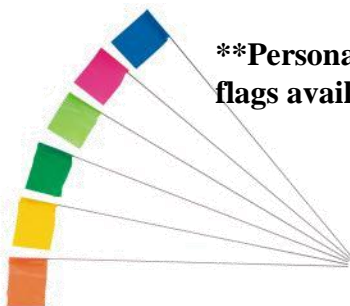
Hard Surface Marking Paints

Color	Pkg. Size
White	12 cans/case
Yellow	12 cans/case
Orange	12 cans/case
Black	12 cans/case
Blue	12 cans/case
Red	12 cans/case



Hard Surface Marking Paints

Color	Pkg. Size
Highway White	12 cans/case
Highway Yellow	12 cans/case
Handicap Blue	12 cans/case
Firelane Red	12 cans/case
Cover-up Black	12 cans/case



****Personalized flags available****

Landscape Marking Flags
100/bundle (blue, white, red, yellow, and orange)

Landscape marking tape by the roll or case.



Lawn & Sports Turf Division (973) 252-5455 Golf Division (973) 252-6634

www.GRIturf.com

Long and Short Handled Tools



Service ♦ Technical Support ♦ Quality Products



- A. Heavy Duty hand pick (rotin)
- B. Mini hand pick
- C. Mulch Fork (10 tine)
- D. # 10 aluminum scoop

- E. Cultivator (4 tine)
- F. 13" spade w/foot pad
- G. 15" LH spade w/foot pad
- H. Replacement foot pad



- 24" yellow tree cart
- 1,200 lb capacity
- Separate utility tray also available.
- Available by special order only.



- 24" purple tree cart
- 1,200 lb capacity
- Separate utility tray also available.
- Available by special order only.



Lawn & Sports Turf Division (973) 252-5455

Golf Division (973) 252-6634

www.GRIturf.com

Long and Short Handled Tools



Service ♦ Technical Support ♦ Quality Products



- A. 3" x 6" tamper
- B. 6" x 6" tamper
- C. 8" x 8" tamper
- D. 10" x 10" tamper



- E. T-handle half-moon edger
- F. Half-moon edger
- G. Wire-twist/J Hook Combo

- H. 20" long container hook
- I. 8 or 10 cu ft. double wheel
- J. 8 cu ft. single wheel



- A. Short-handle drain spade
- B. Fiberglass L/H 5" irrigation spade
- C. Fiberglass L/H 4" irrigation spade

Lawn & Sports Turf Division (973) 252-5455 Golf Division (973) 252-6634

www.GRIturf.com

Rakes



Service ♦ Technical Support ♦ Quality Products



Product	Number of teeth	Product #
36" Wide-sweep lawn rake	36	#43·Aluminum
30" wide-sweep lawn rake	30	#83·Aluminum
Wood grading rake	28	#60
Wood lawn rake	28	#39
Wood hay rake	14	#05



Product	Products #
24/24 ProGrade Spring Brace Rake	40924
24" Poly Leaf Rake	40895
30" Poly Leaf Rake w/paddle handle	40895



Lawn & Sports Turf Division (973) 252-5455 Golf Division (973) 252-6634

www.GRIturf.com

Rainwear



Service ♦ Technical Support ♦ Quality Products



Rain Boots

Product	Description	Style	Size
Hi-Top work rubber	Covers work shoe up to the ankle	Cleated outsole	S-3XL
Hi-Top work rubber	Covers work shoe up to the ankle	Cleated (wedge) outside	S-2XL
10" Work Boot	Molded in button for secure closure	Cleated outsole	S-3XL
17" Knee Boot	Molded in button for secure closure	Cross hatch outsole	S-2XL



Rain Jackets



Product	Description	Size
Durascrim	2x coated PVC on polyester (yellow). Medium duty	S-3X
Storm-champ	0.20mm PVC on Nylon coating. Medium duty	S-3X
Storm-flex	0.20mm polyurethane on-knit. Medium duty	S-3X



Tru-Chek® Direct Reading Rain Gauge
Measures:
0.01—6" or
0.5—150mm of rainfall.

Lawn & Sports Turf Division (973) 252-5455 Golf Division (973) 252-6634

www.GRIturf.com

Compliance Safety



Service ♦ Technical Support ♦ Quality Products



Stay safe and clean with Tyvek Spray Suits. 25/case Available in all sizes from S-3X (M-2X in stock sizes)



Please Note:
All Survivair and Willson Cartridges in stock are T-Series - Bayonet Fitting



DISPOSABLE NITRILE GLOVES 50/BOX
NITRILE LONG CHEMICAL GLOVES
BLACK PVC CHEMICAL GLOVES
BROWN JERSEY WORK GLOVES
ELVEX® BLUE FOAM UNCORDED EARPLUGS
ELVEX® QUATTRO CORDED REUSEABLE EARPLUGS
TASCO PIONEAR EAR MUFFS
OLYMPIC 30-60™ SAFETY EYEWEAR
DISPOSABLE PAPER UTILITY MASK
RESPIRATOR WIPES, 100/BOX
SURVIVAIR® VALUAIR® PLUS RESPIRATOR
REUSABLE RESPIRATOR STORAGE BAGS, 3 PACK
SURVIVAIR R95 PRE-FILTERS



We can get any other products you might need to make your workplace safer. Request a Compliance Safety catalog for a full selection of items.



Lawn & Sports Turf Division (973) 252-5455 Golf Division (973) 252-6634

www.GRIturf.com

Hard Goods for Turf Professionals



Service ♦ Technical Support ♦ Quality Products

Hoses



Products	Size	Group
Black Hose	1"x50'	Commercial Duty
Black Hose	3/4"x50'	Commercial Duty
Green Hose	3/4"x50'	Country Club
Green Hose	3/4"x75'	Country Club
Green Hose	3/4"x100'	Country Club
Green Hose	1"x50'	Soft & Supple
Green Hose	1"x100'	Soft & Supple
Green Hose	1"x125'	Soft & Supple

Back Pack and Handheld Sprayers

Product	Size	Description	PSI Rating
Sp 0	4 gallon	Has the ability to agitate wettable powders all at the same time.	150
Sp 1	4 gallon	Extremely durable, and capable of two million strokes without leaking (equal to over two years of constant use).	70
Sp 2	4 gallon	Patented process that completely seals the piston mechanism, the SP2 features a pump that is virtually leak-proof - something no other external unit has ever been able to claim.	160
Birchmeier	2.5 gallon	Operation pressure 90 psi for high working performance. Pump mounted externally for low maintenance and more protection against dirt.	90
Solo handheld sprayer	1,2,3 gallon	For the small jobs solo has introduced 1-3 gallons handheld sprayers.	

Lawn & Sports Turf Division (973) 252-5455 Golf Division (973) 252-6634

www.GRIturf.com

Assorted Hard



Service ♦ Technical Support ♦ Quality Products

Goods

Sod Staples

Size	Pkg. Size	Descriptions
6"x1"x6"	1000/box	Steel
8"x1"x8"	500/box	Galvanized

Lapping Compound

Grit	Description
50 Grit	Fast metal removal for fairway mowers
80 Grit	Regular maintenance of fairway and green mowers and finish lapping
120 Grit	Fine finish lapping of green and tee mowers
150 Grit	Extra fine finish lapping of green and tee mowers
220 Grit	Ultra-fine finish lapping of green and tee mowers

Tarps

Available Sizes

10'x12'

10'x20'

12'x16'

20'x20'



Additional Products

Products

Soil Probe

Soil Thermometer

Macroscope w/pouch

Landscape trash can (65 gallon)

Kelway soil pH meter

Various sizes/styles available:



Hollow braid ¼" x 1000' in yellow, white, green or gr/wh

Polypro twist rope ¼" x 1200', 3/8" x 600 or ½" x 500' in white or yellow



Lawn & Sports Turf Division (973) 252-5455

Golf Division (973) 252-6634

www.GRIturf.com



Service ♦ Technical Support ♦ Quality Products



We carry many items in our golf supply inventory. If we don't have it, we can get it. Request a catalog or product list from any of these companies by contacting Grass Roots using either phone number listed at the bottom of this page. We will be happy to take care of your requests.



products also available from:

MarkSmart™ Golf



Lawn & Sports Turf Division (973) 252-5455 Golf Division (973) 252-6634

www.GRIturf.com

Services Available



Service ♦ Technical Support ♦ Quality Products

Turf Samples Analyzed: We can help identify common and complex turfgrass diseases by having your samples sent out to the **Rutgers** Plant Diagnostic Lab. We can pick up your sample and deliver it to the turfgrass research center to ensure timely identification and correspondence back to you. Our experts will then provide suggestions to resolve any issues and to avoid a recurrence.

Soil Samples Analyzed : We can help you with your soil and grounds by having your soil tested by the experts at AGSource Harris Labs, the agricultural industry's premier testing laboratory since 1958. We will pick up these samples, ship them to AgSource Labs and get back to you as soon as results are available.

Water Samples Analyzed: We can also help you with your water by having your water tested by the experts at AGSource Harris Labs, the agricultural industry's premier testing laboratory. We will pick up these samples, ship them to AgSource Labs and get back to you as soon as results are available.



For more information on AgSource Harris labs, please follow their link on our website, www.grassrootsturfonline.com

Additional Resources

www.lebanonturf.com

www.betterturf.com (BASF)

www.syngentaprofessionalproducts.com

www.dowagro.com/turf

www.growthproducts.com

www.paraide.com

www.compliancesafety.com

www.solu-cal.com

www.andersonsgolfproducts.com

www.mauget.com

www.nutrite.com

www.midwestrake.com

Lawn & Sports Turf Division (973) 252-5455 Golf Division (973) 252-6634

www.GRIturf.com